



Volume 21, Issue 3 Published Bimonthly by the Sierra Sage of South Orange County Group of the Sierra Club
May 1 through June 30, 2013

You are invited to join us at our monthly meeting:

We will discuss environmental issues and conservation issues current to Orange County Residents as well as discuss the various hikes and other activities being presented in Orange County in the near future. In addition, we will present a program on “**The Poseidon Adventure!**”

Ray Hiemstra, of Coastkeepers, will share with you some of the recent developments in water supply for Orange County and how Wall Street and private corporations are working to make municipal water supplies their new profit center. There is an old saying in California that whisky is for drinking and water is for fighting over, and Orange County is no exception. This presentation will cover the good the bad and the ugly of new water supplies in Orange County and the serious effects these projects can have on our environment. Also learn about the actions you can take in the next month to protect our environment and your wallet from the ambitions of the water barons.

**WHERE: Norman Murray Community and Senior Center
24932 Veterans Way, Mission Viejo, CA**

WHEN: 7:00 PM, Tuesday, May 28, 2013

**ROOM: Juniper Room
Refreshments Provided.**



DIRECTIONS:

Northbound on I-5, exit at La Paz, turn right onto La Paz, cross Marguerite Parkway and proceed over Oso Creek. Turn left onto Veterans Way and drive to the Murray Center Parking lot.

Southbound on I-5, exit at La Paz, turn left onto La Paz, cross Marguerite Parkway and Oso Creek. Turn left onto Veterans Way and drive to the Murray Center Parking Lot

Another Great BBQ at Starr Ranch

We all had a great time at Starr Ranch on Sunday, April 14th. Approximately 100 people were there, sampling the many scrumptious salads, veggie and hamburger, and deserts. The weather sort of cooperated by holding off the rain until the next morning but did favor us with some cloud cover. Two bird walks and four hikes allowed the folks to explore and enjoy the natural areas on the Ranch. In addition, we were favored with a great performance from the Band known as TTED who played county, folk and bluegrass music most of the afternoon.

Some special thanks go to Patty Sappingfield and her crew handling the food; John Kaiser and his crew grilling the veggie burgers and the hamburgers; Sharon Koch and her crew handling the beverages — - And a big Thank You to **BayHawk Ales** who donated the beer; Duana Miller and her crew who handled the opportunity drawing; Gary McCoppin and his crew who handled the membership and t-shirt table, Sylvie Coté and her crew who planned, scheduled and conducted the hikes and Gary Meredith for his special insights contributed during his two bird-walks; and Glenn Pascall and Mifanwy Kaiser for expediting the registration process.

Funds from this annual event will be shared between the Audubon Starr Ranch Conservancy and the Sierra Club. The Clubs portion will go to support local hiking, conservation and environmental activities in South Orange County. Current areas of support include the Santa Ana Mountains Task Force and its efforts to preserve the local mountain areas and maintain the trails, the San Onofre Task Force which is enhancing public awareness of the problems and activities relating the Nuclear Generating Plan, the public education efforts of the Global Warning Committee and many other similar areas.

——Mike Sappingfield, Chair, Starr Ranch BBQ Committee



EDITORIAL — TOLL ROAD

Toll Road Finances Questioned

The Los Angeles Times reported earlier in April that several studies had raised questions regarding the financial stability of the Transportation Corridor Agencies, who build and run the Orange County Toll Roads. Other sources also confirm that the Attorney General and the State Comptroller have been asked to do an audit of the agency.

The TCA has repeatedly refinanced the bonds which support the toll roads, each time extending the payoff time further in the future. At a time when corporate bonds are at an all time low, TCA is paying top dollar to finance its projects.

Despite these problems, or perhaps, because of them, the TCA is plunging forward to build the next section of the 241 Toll Road south from Oso Parkway to near, but not all the way to, the Ortega Hwy. All this despite the denial of necessary permits by the Coastal Commission and the subsequent rejection of their appeal by the Department of Commerce.

It makes us wonder what happens if their financial bubble collapses? Who will pick up the tab for their expenditures? Will the investors? Or will the taxpayers —i.e., us?

Isn't it time to think about changing the TCA from a road building company to a toll collecting and road maintenance company? Maybe they could set their finances into order and pay off their bonds if they didn't have the large staff whose very jobs depend on building more roads?

Since the TCA is composed of City Council members from the various cities in Orange County, maybe it is time we asked our City Council representatives on the TCA to reconsider where they are going and what the long range impacts are?

Perhaps, if we do that, we won't see the bulldozers go through the Richard and Donna O'Neill Land Conservancy, the San Mateo Campground, and Trestles Beach!

——Mike Sappingfield, Editor, Sierra Sage Newsletter.

Poseidon Huntington Beach Desalination Project

The proposed Poseidon Huntington Beach desalination project is a disaster for for Orange County and the state of California on every level. This project, like the one recently approved in Carlsbad and others proposed all along the coast are an example of using the "last resort first" in water supply. Historically desalination has only been used in areas that have severe water shortages due to the high equipment and energy costs to produce the water. The appropriate approach for Orange County and throughout California is to use a loading order for new water that first conserves as much as possible and then recycles water, including urban runoff and wastewater, before resorting to expensive desalinated water.

Worst of all the county does not even need the water. The idea is to use the water produced in Huntington Beach as a backup source for south Orange County, which has no aquifer to rely on if imported supplies are cut off by a disaster, and to feed the development of places like Rancho Mission Viejo and Banning Ranch. Private corporations such as Poseidon see a potential gold mine in producing and selling "disaster proof" desalinated water where they can find buyers foolish enough to pay two to three times the going rate for potable water. While wasting ratepayer money is one thing, destroying the environment to product this water is another ugly fact.

The Poseidon HB desalination plant will use an open ocean intake that pulls in about 250 million gallons of seawater every day, killing all of the sea life that comes with it. While the adult fish kill is a problem, the bigger problem is the 100% mortality of the billions of larvae and other small creatures that are sucked through the pipes of this facility. In fact taking into account this larval kill, even allowing for a 95% natural mortality of larvae, results in enough halibut being killed to equal the entire annual catch of a average commercial fisherman. and that is just one species, from one plant. The actual fish and invertebrate mortality from these plants is enormous. So much so that the state banned the power plants from continuing to use these intake pipes after 2025. But this ban does not apply to desalination plants.

Additionally the desalination plants go a couple steps further in environmental destruction. A product of desalination is a toxic brine that has to be disposed of. In this case it is being dumped offshore of the desal plant creating a 1/4 to 1/2 mile area around the outfall where marine life can't live, reducing fish stocks and recreational fishing opportunities. The final insult is the energy demands of the plants. The HB plant will use enough electricity for 30,000 homes, 24/7, 365 days a year. This will not only strain our electricity grid (and be a reason to re-start San Onofre) but it adds millions of tons of CO2 to the atmosphere adding to the climate change problem. This is just a few paragraphs of the bad news connected with this plant. Everyone who cares about the environment should oppose the approval of this plant and others like it.

This is not to say desalination will never be part of our future, indeed it certainly will. But we need to do the research to develop better desalination technology first and then put the plants where they are desperately needed and size them for the need to be met. The current proposal is only sized and located for corporate profit. There is a lot more information on the OC Coastkeeper website at <http://www.coastkeeper.org/desal-hb/> If you have any questions just let me know.

—Ray Heimstra

THE ORANGE COUNTY GLOBAL WARMING COMMITTEE (OCGWC)

The OCGWC has been in operation for about five years and is a Sierra Club task force. Our goal is both for members to become educated on Global Warming/Climate Change(GW/CC) and to educate Orange County citizens and officials on the reality, consequences, urgency, and solutions for GW/CC.

The OCGWC meets once a month at the REI building in Tustin and has three co-Chairs; Steve Wicke, Laura Jackson and Dan Hofer. See page 7 for time and date.

The OCGWC participates in various efforts to directly influence public policy. For example, they participated, along with Mark Tabbert of the Climate Change Lobby, in meeting with the Mayor of San Clemente, and urged him to support efforts to get San Clemente to go on record in favor of the carbon tax. The OCGWC also sponsored a talk by Chris Prelitz, an authority on sustainability, to a well attended meeting at a local church in February.

Members, on an individual basis, are actively learning about the dangers of GW/CC and many write articles to the local press to express these dangers. For example, one member, Diane Etchison, regularly sends out important messages on GW/CC to our members. Several members went to Los Angeles in March to march in a nationwide protest against GW/CC. To attract more members, Dan Hofer manages a Meet-Up site which has increased our membership. We hope and plan our OCGWC can expand its efforts to make Orange County citizens more fully aware of the dangers of GW/CC.

—Paul Carlton



Outings



Saturday, May 04, 2013 8:30 AM

0417-Sierra Sage of SOC Group Outing

O: Cristianitos South

4 mi, 650' loss. Car shuttle. Trail starts in South San Clemente area, then into San Onofre State Park. Moderate terrain, beautiful views into open space rolling hills. Meet 8:30 am at South OC Rideshare, or 9 am at South end of La Pata in San Clemente (from I-5, E on Pico, R on La Pata to end). Bring water, lugsoles, hat. Rain cancels. *Chester Stipe 949-363-1142 chetbar@cox.net*

Don Clarence 949-709-2967 don-clarence@hotmail.com

Saturday, May 11, 2013 8:00 AM

0417-Sierra Sage of SOC Group Outing

O: Bear Canyon Loop

6.5 mi, 1300 gain. Hike from the candy store on Ortega highway up to the Bear Ridge trail to Four Corners, then return via Bear Canyon trail. Enjoy the spring wildflowers among the chaparral on a high plateau in the Santa Ana Mountains. Meet 8 am at the South OC Rideshare (Ortega Plaza at Rancho Viejo Rd & Ortega Hwy, 1 block east of I-5). We will carpool to the Candy Store Trailhead Parking Area. Bring 2 quarts water, lunch, hat, and sunscreen. Cameras optional. FSP required if parking at trailhead.

Michael Sappingfield 949-768-3610 mike-sapp@cox.net

Michael Metcalf 949-492-6277 msmet-calf04@yahoo.com

Wednesday, May 15, 2013 7:30 AM

0407-Orange County Group Outing

O: Icehouse Canyon OC, Sierra Sage

8 mi, 2600' gain in the San Gabriel Mtns along a mountain stream and up through pines to the saddle. Meet 7:30 am at the Tustin Rideshare (Stater Bros. Redhill Ave., one block SW of I-5). Bring 2 qts water, lunch, lugsoles. Rain cancels.

John Kaiser 714-968-4677 jkai39@gmail.com

Anna Slattery 951-659-4083 mslat@pacbell.net



Saturday, May 18, 2013 7:30 AM

0417-Sierra Sage of SOC Group Social Event

O: Irvine, CA Train to USS Midway Museum, San Diego, CA

Leave from the Irvine, CA train station in the early morning on a fun group day trip to tour this famous Navy aircraft carrier museum. Arrive at San Diego's historic Santa Fe depot then walk several blocks to our destination. Come aboard through the hangar deck and out onto the flight deck with its classic collection of aircraft. Experience what it is like to be part of a "city at sea." Self-guided audio tour through 60 exhibits and 25 aircraft, movies, climb aboard aircraft and more! Retired military personnel conduct tours of the living quarters, dining/kitchen areas, laundry facilities, post office and the Con, heart of the ship's navigation operations. Have lunch in the cafe and browse the gift shop. There may be time to walk to Seaport Village before return to Irvine in late afternoon (4pm approx.). Meet at Irvine station by 7:30 am to buy own ticket (Train departs @ 8:21am. Adult RT price is approx \$46; senior RT rate is approx \$39; AAA disc also avail.). Park free in structure at the station. Bring comfortable walking shoes, water, layered clothing, sun protection and money for museum ticket, lunch and gift shopping. Call leader, Mary, to reserve for group ticket pricing: Adult \$14; senior 62+ \$11; youth \$8). Optionally, meet group at the USS Midway approx. 10:30am.

Mary L Morales 949-636-2981 10ter@cox.net

Marty Rexinger 818-681-0359 mjrex@stationsix.com

Sunday, May 19, 2013 1:00 PM

0417-Sierra Sage of SOC Group Outing

O: Wildflower Walk - Donna O'Neill Land Conservancy

Easy 2 mile hike in spring wildflowers. Meet at So. Orange County rideshare at 12:30 p.m. or at trailhead at 1:00 p.m. Bring water. Rain cancels. Children accompanied by parent welcome. Donation of \$10 for adults, \$5 for children, Conservancy members free. Please register in advance at www.rmvreserve.org. Group size limited. Contact Duana Miller at 949-831-0890 for more information.

Duana L. Miller 949-831-0890 duana103@hotmail.com

Patty Sappingfield 949-768-3610 solanese@cox.net

Wednesday, May 22, 2013 8:30 AM
0407-Orange County Group Outing
O: Malibu Creek State Park to MASH TV Set Location OC/S Sage/OCSS

6 mi rt, We will walk through the Malibu Creek State Park in the Santa Monica Mountains, by running streams, oak woodlands and meadows to the location in which the TV show MASH used for its outdoor set. Orange County hikers meet 8:30 am at the Irvine Train Station, E from I-5 on Alton Pkwy in Irvine, at the south end of the parking structure for carpool arrangements. If you would prefer meeting at Malibu Creek State Park, contact Mike Sappingfield for specific meeting instructions. Bring water, munchies, good walking/hiking shoes, hat, etc. Rain cancels.
Delores Denton 949-581-8396 deadenton@hotmail.com
Michael Sappingfield 949-768-3610 mike-sapp@cox.net

Wednesday, May 29, 2013 8:45 AM
0407-Orange County Group Outing
O: Trabuco Ridge and Helicopter Hill OC/S Sage
 4 mi loop, 900' gain. A series of San Juan Capistrano trails between Rancho Viejo Road and Mission Viejo borderline, with amazing views of wilderness and urban scenes from several steep hills. Meet 8:45 am, Park & Ride lot at Junipero Serra Rd and Rancho Viejo Rd., 1 block E of I-5 Fwy in San Juan on R. (NOT the South Orange County Rideshare). Bring water, hat, snack, comfortable shoes. Rain cancels
Bob Hansen 949-586-4928 awildtrout@cox.net
Chester Stipe 949-363-1142 chetbar@cox.net

Wednesday, June 05, 2013 9:00 AM
0407-Orange County Group Outing
O: Holy Jim Trail
 4.5 mi, 625' gain. We will hike about 1 mi along the Trabuco Cyn Rd, mostly shaded, and then up to the Holy Jim Falls. Meet 9:00 am in front of Target in Rancho Santa Margarita. From I-5, E on Alicia Pkwy to Santa Margarita Pkwy, R on Santa Marg. Pkwy to Ave de Las Flores, R to Target. Park closer to Santa Marg. Pkwy. Carpool to start of hike; parking limited and Forest Adventure Pass needed. Bring 2 qts water, snack, lugsoles.
Bob Hansen 949-586-4928 awildtrout@cox.net
Audrey Tomovich 949-830-8936



Saturday, June 08, 2013 9:00 AM (Time Tentative)
0417-Sierra Sage of SOC Group Outing
O: Thunder (8587'), Telegraph (8985'), and Timber (8303') Mountains, from Baldy Notch to Icehouse Canyon

8.5 mi, 2700' gain/3400' loss. Join us as we hike the "3 Ts". We will meet/start at the Mount Baldy ski lift area (6320'), take the chair lift up to the Baldy Notch (7840') then we will hike the three Ts. From Timber Mountain, we will descent through Icehouse Canyon. This trip requires a car shuttle back to the starting point. If chair lift is not working, this will add an additional 1500' gain. Not a beginner hike. Must be comfortable hiking long distances at altitude. Moderately strenuous daylong hike with possible spectacular views of the mountains. Bring hat, jacket, sunscreen, lunch, 3-4 qts water, 10 essentials, \$ for lift (approximately \$20). Space limited by permit; leaders to provide wilderness permit. Contact leaders to reserve space and for more information.

Todd Clark 714-803-0195 clarkta@hotmail.com
Sylvie Cote 949-547-2998 mlsylvie@hotmail.com

Saturday, June 15, 2013 7:00 AM
0407-Orange County Group Outing
San Jacinto State Park and San Bernardino National Forest OC/PVS

One day of hiking in San Jacinto State Park and the San Bernardino National Forest. Leave Sat. morning 6:30 AM from Redondo Beach or 7AM Orange in THE OC, return same day. Four levels of hikes with group size limited by permit: Hike 1.. 14 mi, 2300' gain to San Jacinto Peak (10,804), moderate fast pace. Hike 2.. 12 mi, 1500' gain to Tahquitz Peak (8,846), moderate pace. Hike 3.. 10 mi, 1300' gain to Hidden Lake and Wellman Divide, slow moderate pace. Hike 4.. 8 mi, 700' gain to Hidden Lake and Willow Creek, slow pace. We will take the Palm Springs Tram up and start all hikes at the top. All hikes end at Humber Park Car Parking Lot where cold drinks and the bus will be available. The bus then drives to Banning for a Fast Food stop and we return to O.C. drop-off at 8:20 PM, Redondo Beach. 9:00 PM. Price.. \$45.00 includes bus transportation, driver gratuity, and drinks at conclusion of hikes. (Tram cost not included, est. \$25). The cancellation penalty is \$10. If you cancel later than 30 days before the trip, a refund will be made only if the trip is full and you can be replaced. Send check made out to Sierra Club for \$45, 1 big SASE, 1st and 2nd hike choice, H & W phone #'s, email, to reservations/leader: Sandy Graham, 2891 Wyngate Rd., Orange, CA, 92857. Orange County leaders Todd Clark and Sylvie Cote
Todd Clark 714-803-0195 clarkta@hotmail.com
Sylvie Cote 949-547-2998 mlsylvie@hotmail.com

Saturday, June 22, 2013 7:30 AM

0417-Sierra Sage of SOC Group Outing

O: Caspers Park, West Ridge to Cougar Pass Hike

6 miles, 600' gain. We will hike through the prickly pear cactus garden, through the Oak grove, up the Dick Loscorn Trail to the West Ridge for views across the ridges and valleys of South Orange County. Then will drop down the Starr Rise Trail, hike upstream on the Bell Canyon Trail to the Oso Trail, then return via the Cougar Pass Trail to the shady Live Oak Trail back to the Parking Lot. Met at 7:30 am at the South Orange County Rideshare point in front of the Ball Park Pizza in the Ortega Plaza, SE corner of Ortega Hwy and Rancho Viejo Rd. Bring 2 qts water, hat, lug-soles, camera/binoculars and munchies.

Michael Sappingfield 949-768-3610 mike-sapp@cox.net

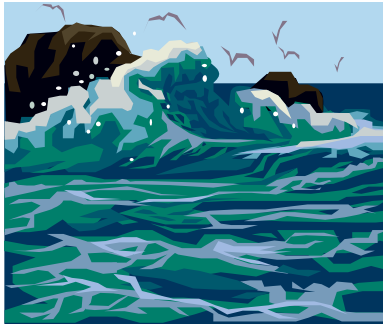
John Kaiser 714-968-4677 jkai39@gmail.com

Wednesday, June 19, 2013 9:00 AM

0407-Orange County Group Outing

O: Crystal Cove Beach Walk Orange County/S Sage

7 mi, 100' gain. An early summer stroll along the beach & bluff top in this beautiful State Park in Newport Beach, optional stop at Ruby's Date Shack. Meet 9:00 am at the SW corner of PCH & Cameo Shores. Park on Cameo Shores or Cameo Highlands. Bring water, walking shoes.



Peter R Height 949-713-4569 prheight1@cox.net
Michael Sappingfield 949-768-3610 mike-sapp@cox.net

Wednesday, June 26, 2013 9:30 AM

0407-Orange County Group Outing

O: Mason Park Orange County/OCSS

4-5 mi, min gain. We will take a leisurely stroll in the Park and through the natural area along University Av. Meet 9:30 am in Wm R Mason Regional Park; from I-5, W on University Av to the Park on the L. (\$3 parking). Turn L after entering, then L again at the first parking area. Bring water, tennis ok for the hike. Bring a lunch dish for 4-5 to share, plus your own utensils, cup, drink. Ldr: Pita Landesman. Assts: Judy Mulry, Garry McCoppin

Pita Landesman 949-425-8966 pitanbob@cox.net

Judith E Mulry 949-588-1347 judymulry@aol.com

Garry McCoppin 949-858-7292 mccoppin@cox.net

Saturday, June 29, 2013, 9:00 AM

0417-Sierra Sage of SOC Group Outing

C: Tour of Coastal Treatment Plant, Laguna Niguel

'What happens to it when you flush?' Chief Plant Operator Hillary Kelly will give us a tour of the Coastal Treatment Plant under the South Orange County Wastewater Authority. Meet 9 am in the dirt parking lot/staging area of Aliso/Woods Canyon Wilderness Park, 28373 Alicia Parkway, Laguna Niguel. Carpool 3 miles to the treatment plant. Expect lots of walking; no high heels please. Optional picnic lunch in Laguna Niguel Regional Park across the street, after the tour. Co-Leaders: Margot Lowe, Sylvia Stevenson.

HOW TO FIND OUTINGS ON THE ANGELES CHAPTER WEB SITE!

Access the Chapter Web Site by using the url:

www.angeles2.sierraclub.org;

Click on **CALENDAR OF HIKES/TRIP/EVENT**

NEW MEXICO ADVENTURE

October 12-19, 2013

Albuquerque Balloon Fiesta, Santa Fe, Taos and Taos Pueblo, Acoma Sky

Pueblo, Chaco Canyon, Los Alamos, and Bandelier National Monument are just some of the many attractions on this fun filled exploration of the "Land of Enchantment". \$1195 for



Sierra Club members (\$1250 for non-members). The trip includes lodging (double occupancy) for 7 nights; Admission fees for Balloon Festival, National Park and Monuments visits, Taos and Acoma Pueblo visits, and museum admissions for scheduled visits; breakfasts, two lunches, and several happy hours; and all transportation while in New Mexico. Most meals, and transportation to and from New Mexico not included. For information, contact Mike Sappingfield at mikesapp@cox.net, or phone 949-768-3610. A \$500 deposit will reserve your place on the trip with remainder due July 1, 2013. Mail reservation request and \$500 deposit, payable to Sierra Sage--Sierra Club, and

2 SASE, to Mike Sappingfield at 26352 Via Juanita, Mission Viejo, California 92691. Leaders: Mary Morales, Mike & Patty Sappingfield



DIRECTORY OF SIERRA SAGE OFFICERS

Title	Name	Phone	Email
Chair	Duana Miller*	949-831-0890	duana103@hotmail.com
Vice Chair	Todd Clark*	714-803-0195	clarkta@hotmail.com
Secretary	John Kaiser*	714-968-4677	jkai39@gmail.com
Treasurer	Patty Sappingfield*	949-768-3610	solanese@cox.net
Outings Chair	Mike Sappingfield*	949-768-3610	mikesapp@cox.net
Asst Outings Chair	Todd Clark*	714-803-0195	clarkta@hotmail.com
Asst Outings Chair	Sylvie Coté*	949-547-2998	mlsylvie@hotmail.com
Membership Chair	Garry McCoppin	714-269-5078	mccoppin@cox.net
Conservation Chair	Glenn Pascall		gpascall@att.net
Communications	Mike Sappingfield*	949-768-3610	mikesapp@cox.net
Webmaster	Bob Hansen		awildtrout@gmail.com
Circulation Chair	Patty Sappingfield*	949-768-3610	solanese@cox.net
Political Chair	Sharon Koch*	949-717-7745	slkoch@ix.netcom.com
Chapter Rep	Sharon Koch*	949-717-7745	slkoch@ix.netcom.com
Program Chair	Sylvia Stevenson*	949-487-2660	sylvia_stevenson@yahoo.com
Executive Comm	Garry McCoppin*	714-269-5078	mccoppin@cox.net
FOF Task Force	Bill Holmes	949-496-5323	billten4@sbcglobal.net
Aliso Hobo Ridge TF	Penny Elia		greenpl1@cox.net
Santa Ana Mtns TF	John Kaiser*	714-968-4677	jkai39@gmail.com
San Onofre TF	Glenn Pascall		gpascall@att.net

* Denotes voting member of the Executive Committee

SIERRA SAGE MEETINGS.

- Global Warming Committee. Meets monthly in the community room at the REI Store in Tustin (I-5 and Jamboree on the 2nd Sunday of each month from 3 to 5 pm. Contact Laura Jackson at laurajackson@cox.net
- Preserve the Coastal areas of Orange County? Contact Penny Elia at greenpl1@cox.net
- Concerned about the safety of the San Onofre Nuclear Generating Station? Contact Glenn Pascall at gpascall@att.net
- Want to keep the Santa Ana Mountains wild? Or even want to help maintain the trails in the San Mateo Wilderness Area? Contact John Kaiser at jkai39@gmail.com
- Still think the toll road through the Richard and Donna O'Neill Nature Conservancy, San Mateo Campground, and Trestle Beach is a bad idea? Contact Bill Holmes at bill.holmes@att.net



Subscription Information Sierra Sage Newsletter

1 Year: \$9.00

2 Years: \$15.00

Please mail your check to:

Sierra Sage

P. O. Box 6204

Laguna Niguel, CA 92607

Sierra Sage is scheduled for delivery on Jan 1, March, 1, May 1, July 1, Sept 1, and November 1 of each year. Please note that submission deadline is one month prior to publication.

Electronic copies are sent via email and are free. Just send an email to mikesapp@cox.net and tell us you want the emailed Newsletter

INTERNET ADDRESSES:

Angeles Chapter: www.angeles2.sierraclub.org

Sierra Sage: www.angeles.sierraclub.org/sage



Sierra Sage of South Orange County
P. O. Box 6204
Laguna Niguel, CA 92607

Change Service Requested

Non-Profit Org
 U. S. Postage PAID
 Mission Viejo, CA
 Permit No. 814

Subscribers.....Check the
 "Last Issue" date on your
 label and renew early.
 Don't forget to give us your
 new address if you're mov-
 ing so you'll get your Sage
 at your new place on time!

Website:

<http://angeles2.sierraclub.org/sage/>

HIKE OF THE MONTH

Saturday, June 22, 2013 7:30 AM

0417-Sierra Sage of SOC Group Outing

O: Caspers Park, West Ridge to Cougar Pass Hike

6 miles, 600' gain. We will hike through the prickly pear cactus garden, through the Oak grove, up the Dick Loscorn Trail to the West Ridge for views across the ridges and valleys of South Orange County. Then will drop down the Starr Rise Trail, hike upstream on the Bell Canyon Trail to the Oso Trail, then return via the Cougar Pass Trail to the shady Live Oak Trail back to the Parking Lot. Met at 7:30 am at the South Orange County Rideshare point in front of the Ball Park Pizza in the Ortega Plaza, SE corner of Ortega Hwy and Rancho Viejo Rd. Bring 2 qts water, hat, lugsoles, camera/binoculars and munchies. Ldrs, Mike Sappingfield & John Kaiser

Join the Sierra Club

Yes, I want to join! I want to help safeguard our nation's precious natural heritage. My check is enclosed.

Name _____

Address _____

City, State _____ Zip _____

F94Q -0417

Membership Categories (circle one)

	Individual	Joint
Introductory	\$15	
Standard	\$39	\$49
Supporting	\$75	\$100
Contributing	\$150	\$175
Life	\$1000	\$1250
Senior	\$25	\$35
Student	\$25	\$35
Limited Income	\$25	\$35

Send Check to Sierra Club, P. O. Box 421041, Palm Coast, FL 32142-1041 Membership not tax deductible