



Volume 21, Issue 4 Published Bimonthly by the Sierra Sage of South Orange County Group of the Sierra Club
July 1 through August 31, 2013

You are invited to join us at our monthly meeting:

We will discuss environmental issues and conservation issues current to Orange County Residents as well as discuss the various hikes and other activities being presented in Orange County in the near future. In addition, we will present a program on the nearby **Santa Ana Mountains by Joel Robinson, the Naturalist for You.**

PROGRAM: Ever wondered about the many wonderful plants in the Santa Ana Mountains? Come see Joel Robinson, the Naturalist For You who is an expert on the Botany of the local hillsides.

WHERE: **Norman Murray Community and Senior Center**
24932 Veterans Way, Mission Viejo, CA

WHEN: **7:00 PM, Tuesday, July 23, 2013**

ROOM: **Juniper Room**
Refreshments Provided.

DIRECTIONS:

Northbound on I-5, exit at La Paz, turn right onto La Paz, cross Marguerite Parkway and proceed over Oso Creek. Turn left onto Veterans Way and drive to the Murray Center Parking lot.

Southbound on I-5, exit at La Paz, turn left onto La Paz, cross Marguerite Parkway and Oso Creek. Turn left onto Veterans Way and drive to the Murray Center Parking Lot



San Onofre Shutdown: A Hard-Fought Victory

**by Glenn Pascall, Chair
San Onofre Task Force
Sierra Club Angeles Chapter**

Environmental activists and local citizens breathed a collective sigh of relief on June 7 when Southern California Edison announced it was abandoning efforts to restart the troubled San Onofre nuclear power plant near San Clemente.

Edison's decision capped more than sixteen months of uncertainty following shutdown of the plant at the end of January 2012 after a pipe in the steam generator system leaked small amounts of radioactive water. Subsequent investigation revealed that hundreds of other pipes had unprecedented wear from a pattern of destructive vibrations.

After shutdown, Edison repeatedly sought to prove that even though the problem was unanticipated there was a sure technical fix that would allow restart without risk. Edison's case was undercut by multiple disclosures of its running dispute with Mitsubishi Heavy Industries, designer and maker of the steam generators. The two parties could not agree on mutual responsibility for what went wrong or how to share the costs of technology failure.

The case for restart was further undermined by the Fukushima earthquake and seismic sea wave (tsunami) in Japan that served as a powerful reminder of the hazard in locating a nuclear plant at tidewater in an earthquake zone. Critics noted that 8.4 million people live within 50 miles of San Onofre at a population density ten times that of Fukushima, casting doubt on any plans for emergency evacuation.

Despite a growing sense that restart of this aging and troubled plant was not viable, the outcome was a very close call. Early in 2013 Edison focused on restart of an undamaged unit at 70 percent power for five months, arguing this would prevent vibrations and give the system an extended test. After review of the plan, a technical team from the Nuclear Regulatory Commission recommended that NRC Commissioners approve the proposed restart – with no further public input.

At that point, the outcome was hanging by a thread. A single vote by the Commission would have given the green light for restart. Environmental groups realized this was the crucial moment and put on a full-court press. The Sierra Club's San Onofre Task Force wrote the NRC that grave questions regarding both past performance and untested technology made fast track approval totally inappropriate, both in terms of environmental risk and the NRC's public credibility.

We joined other groups including San Clemente Green, Citizens for Nuclear Responsibility, and Residents Organized for a Safe Environment. Our informal coalition spoke in unison regarding the urgent need to resolve restart through a full Adjudicated License Amendment (ALA) process. This quasi-judicial process includes sworn testimony from independent experts and an open forum for public input.

A crucial development was action on May 13 by the U.S. Atomic Safety Licensing Board (ASLB) in response to a petition from Friends of the Earth. The petition focused on the fact that Edison proposed a type of operation never tested before. Under NRC rules, such novelty made restart an "experiment," which requires a formal license amendment. This key point was the needle in the legal haystack we had all been looking for. The ASLB agreed with the petitioners and recommended to the NRC against any fast-track restart.

On May 15 the Sierra Club wrote the NRC endorsing the Friends of the Earth petition and arguing that even though the Commission could spurn an ASLB decision, to do so in this case would cause deep damage to NRC's public credibility. In the same time period, Senator Barbara Boxer and U.S. Representative Ed Markey urged the Commission to consider the growing body of evidence that San Onofre's steam generator system faced an alarming level of technical uncertainty.

The game was clear: Could citizen groups and elected officials checkmate a staff recommendation and convince the Commission to back the Safety Board?

Environmental groups turned up the temperature. At the Sierra Club, we shared our letter to the NRC with all of you on our website. No less than 3,537 Angeles Chapter members and friends wrote their own personal version of this letter and sent it to the NRC – a record level of response for the Angeles Chapter on any issue.

By the same process, another 2,713 personal letters went to the California Public Utilities Commission from Sierra Club members and friends urging the PUC to stop subsidizing Edison with almost \$60 million a month in ratepayer dollars – a flow of cash that insulated the utility from making hard decisions about the future of the plant.

On June 7, Edison threw in the towel. What triggered that decision may never be fully known. The utility's public statement was certainly true as far as it goes: Carrying the plant in a non-producing condition through further months of uncertainty no longer made economic sense. It is tempting to speculate whether Edison was privately advised by the NRC that the combination of the Friends of the Earth petition and the Safety Board ruling, plus a massive and highly consistent expression of concern from a broad coalition of elected officials, environmental groups and local residents, created a political situation that ruled out approval by the Commission of the NRC staff recommendation for fast-track restart.

TOLL ROAD STOPPED AGAIN!

The Transportation Corridor Agency (TCA), which is responsible for planning, financing, building, and maintain the Toll Roads in Orange County again runs into a road block on their efforts to build the extension of the CA 241 Foothill Toll Road.

During June, the Associated Press reported that the Attorney General of California filed a lawsuit against the TCA charging that the so-called Tesoro Extension was not an independent project but rather calls the extension "a dead-end road to nowhere" and claims its real purpose is to pave the way for a 16-mile extension linking 241 to Interstate 5 near the San Diego County line."

On June 19th, the San Diego Regional Water Quality Control Board conducted a hearing on the TCA's request for a permit to be allow them to discharge waste water during the construction of the Tesoro Extension into the waterways of the county. The hearing was well attended by members of the Sierra Club and the Friends of the Foothills Task Force which has carried the fight against the Toll Road for the past 15 years.

The San Diego Regional Water Quality Control Board, after hearing from many concerned citizens, voted 3-2 to deny the TCA the Permit. The Chair of the Board complimented the staff for their hard work, but he nevertheless concluded that "it is the responsibility of the board to decide policy. In this case, it was not credible that the "project" was a segment rather than the entire road. And the TCA failed to provide sufficient answers to the board on that issue."

Stay tuned for the next installment of TCA's attempts to bulldoze through the San Onofre State Park, the San Mateo Campground, and the Richard and Donna O'Neill Nature Reserve.

Many thanks to all of you who contributed by writing letters, making comments at the hearing and just showed up to demonstrate your support.



**Really,
do you still
need that
old hulk?**



**Why not
donate
it?**

We'll take your car, RV, or
boat — running or not.
You receive a tax
deduction and help the
Angeles Chapter.

Contact Ron Silverman
213.387.4289
ron.silverman@sierraclub.org

Outings



Saturday, July 13, 2013 7:00 AM

0417-Sierra Sage of SOC Group Outing

O: San Jacinto Loop Hike

6 mi round trip, 950' gain and 8 mi round trip, 1750' gain. Two hikes from the top of the Palm Springs Tramway (8420') to Round Valley (9060') via Long Valley trail outbound and the ridge trail back. Longer route will include a hike to Wellmans Divide (9720'). Enjoy the cool 75 degree temperatures in mid summer, walking through the pine forests along cool mountain streams on the upper slopes of Mt San Jacinto. Meet 7 am at the south entrance of parking garage of the Irvine Transportation Center (Irvine Train Station, Ada & Barranca) or 9 am at tramway entrance. Bring money for tramway fee, lunch, water, lugsoles. Rain cancels.

Michael Sappingfield 949-768-3610 mike-sapp@cox.net

Todd Clark 714-803-0195 clarkta@hotmail.com

Sylvie Cote 949-547-2998 mlsylvie@hotmail.com

John Kaiser 714-968-4677 jkai39@gmail.com

Chester Stipe 949-363-1142 chetbar@cox.net

Saturday, July 20, 2013 8:30 AM

0417-Sierra Sage of SOC Group Outing

O: Chapparosa Park To Dana Harbor

7.5 mi, 200' gain. A loop hike via Salt Creek Corridor and Beach and the Headlands, with a bus-link. Meet 8:30 am, Chapparosa Park (lower end of Chapparosa Park Rd off Golden Lantern in Laguna Niguel). View the sunning, surfing, ocean and harbor vistas, seasonal wildflowers, Nature Museum. Return via OCTA Bus #90 from corner Dana Point Harbor Dr, up Golden Lantern to Sardina/St. Christopher, just past Fire Station. Cross the street, L to trail to starting point. Bring water, lugsoles, hat, bus fare (\$2, seniors 0.75), snack/lunch (or buy).

Chester Stipe 949-363-1142 chetbar@cox.net

John Kaiser 714-968-4677 jkai39@gmail.com

Saturday, August 03, 2013 8:00 AM

(0417-Sierra Sage of SOC Group Outing

O/I: Gold Mountain (8235')

O/I: [Sierra Sage, OCSS] Join us as we hike one of the "Seven Summits of Big Bear", 9 miles round trip, 1365' gain. We will hike a portion of the PCT and enjoy possible spectacular views of the Lucerne Valley and Baldwin Lake on this moderately paced hike from the PCT intersection on Doble Dump Road to Gold

Mountain. The last part of the hike to the peak is off trail. Bring lug sole boots, 10 essentials, 3-4 quarts water, lunch, and snacks. Vehicles to display USFS Adventure Pass at trailhead. Interested participants, please contact leaders for more information. Plan on staying overnight in Big Bear and joining us as we hike Delamar Peak on Sunday, August 4. Leaders are not coordinating overnight accommodations. Fire, thunderstorms, or heavy rain cancel.

Frances Penn 714-434-2754 fpenn@rutan.com

Todd Clark 714-803-0195 clarkta@hotmail.com

Sylvie Cote 949-547-2998 mlsylvie@hotmail.com

Sunday, August 04, 2013 8:30 AM

0417-Sierra Sage of SOC Group Outing

O: Crystal Cove State Park Brunch Walk

A "Mike's Hike". 5 mi round trip. Enjoy the cool morning air in a walk along the entire length of the Crystal Cove Beach, break for a potluck brunch, then return to parking lot. Meet 8:30 am at south end of Reef Point parking lot (ocean side of PCH) in Crystal Cove Park. Bring money for park fee and brunch items to carry on the hike to the end of the beach to share with others. Wear comfortable shoes, hat, sunscreen. Rain cancels.

Michael Sappingfield 949-768-3610 mike-sapp@cox.net

Duana L. Miller 949-831-0890 duana103@hotmail.com

Sunday, August 18, 2013 8:00 AM

0417-Sierra Sage of SOC Group Outing

O: Holy Jim Falls

A "Mike's Hike". 4 mi round trip, 300' gain. Join us for a moderately paced hike through a shady canyon to a local waterfall. Who knows, there might even be water this late. Meet 8 am at dirt parking area south of bridge where Plano Trabuco/Live Oak Canyon Road crosses Trabuco Creek in Trabuco Canyon. We will carpool in to the trailhead. FSP required at trailhead if you drive your own vehicle beyond the meeting place. Rain cancels. Bring water, munchies, hat, mosquito repellent, and sunscreen. Ldrs: Mike Sappingfield, Duana Miller

Michael Sappingfield 949-768-3610 mike-sapp@cox.net

Duana L. Miller 949-831-0890 duana103@hotmail.com

**Friday, August 30, 2013 to Monday, September 02,
0417-Sierra Sage of SOC Group Outing**

O: White Mountain car camp

O: [Sierra Sage, OCSS] Join us on this road trip to the White Mountains, where participants can either join on group hikes, including; photographing in the Ancient Bristlecone Forest on early morning and/or evening photo shoots or go on hikes of 1, 2.5 and 5 miles on Saturday or Sunday, attempting to summit White Mountain (14,246), exploring the visitors center, or relaxing in camp with fabulous views of the Owens Valley. On Sunday, for strong hikers who meet all requirements, we will attempt to summit White Mountain, 10 miles round trip from the Research Center (Hiking Day), with a total gain/loss of 1,776'. Friday morning we will meet up with all gear for an early departure out of the OC. Arrive at Grandview Campground in the afternoon for three nights of car camping. Saturday we will explore the trails in and around the ancient, oldest living organisms on earth, the ancient Bristlecones. For the active photographers, we will conduct an early morning photo shoot to catch the first light of dawn, then return to camp for breakfast. Those interested in attempting to summit White Mountain should submit a hiking resume for the past two months prior to the hike to Todd Clark for consideration. Each night we will have a happy hour and cookout. Participants to provide own food. Monday (Labor Day) we will break camp and drive home. Interested participants should contact leaders for more information. Reservations are required.

Todd Clark 714-803-0195 clarkta@hotmail.com

Michael Sappingfield 949-768-3610 mike-

sapp@cox.net

Sylvie Cote 949-547-2998 mlsylvie@hotmail.com

Saturday, August 31, 2013 8:45 AM

0417-Sierra Sage of SOC Group Outing

O: Trabuco Ridge

4 mi loop, 900' gain. A series of San Juan Capistrano trails between Rancho Viejo Rd and Mission Viejo borderline, with amazing views of wilderness and urban scenes from several steep hills. Meet 8:45 am, Park&Ride lot at Junipero Serra Rd and Rancho Viejo Rd, 1 block E of I-5 Fwy in San Juan Capistrano. (NOT the South OC Rideshare). Bring water, hat, lugsoles. Rain cancels.

Chester Stipe 949-363-1142 chetbar@cox.net

Don Clarence 949-709-2967 don-clarence@hotmail.com

Saturday, September 14, 2013 8:30 AM

0417-Sierra Sage of SOC Group Outing

O: Buck Gully

5 mi rt, 300' gain. Easy path close to stream and dense shrubbery, in Newport Coast area. Meet 8:30

am South OC Rideshare, or 9:40 am at trailhead at 5th & Poppy Street in Corona Del Mar, south of Newport Beach. From PCH, take Poppy St inland. Bring water, hat, lugsoles. Rain cancels.

Chester Stipe 949-363-1142 chetbar@cox.net

Don Clarence 949-709-2967 don-clarence@hotmail.com

Saturday, September 28, 2013 8:30 AM

0417-Sierra Sage of SOC Group Outing

O: San Clemente Ridgeline

4.8 mi rt, 560' gain on paved trail. Panoramic views of San Clemente back country and Dana Point. Meet 8:30 am South OC Rideshare, or 9 am at end of Calle Cordillera in San Clemente (from I-5 Fwy, East on Pico, R on Calle Amanecer, R on Calle Cordillera). Bring water, lugsoles, hat. Rain cancels.

Chester Stipe 949-363-1142 chetbar@cox.net

Sylvie Cote 949-547-2998 mlsylvie@hotmail.com

Sunday, September 29, 2013 8:30 AM

0417-Sierra Sage of SOC Group Outing

O: Arroyo Trabuco Wilderness Walk

A "Mike's Hike" Enjoy Southern California's shady tropical paradise in this 4 mi round trip leisurely paced walk into the Arroyo Trabuco Wilderness in O'Neill Park, through one of the biggest sycamore groves in California. There are several stream crossings (yes, there will be water in the creek in August.) Meet 8:30 am at O'Neill Park Access, on Arroyo Vista in Rancho Santa Margarita. Bring water, lunch. Hat and sturdy shoes recommended. Leaders: Mike Sappingfield, Todd Clark.

Michael Sappingfield 949-768-3610 mike-sapp@cox.net

Todd Clark 714-803-0195 clarkta@hotmail.com

OCSS CONDITIONING HIKES

EVERY TUES/THUR @ 6:30 PM

O: IRVINE TURTLE ROCK. Easy/Moderate/Tiger paced hikes, 4-7 mi rt on hilly trails. Bring Water, light hiking boots. 405 Fwy, exit S at University/Jeffery, L on Ridgeline, L on Turtle Rock, pass Sunnyhill, L into parking lot of Turtle Rock Community Park, Ldrs, John LaRue, Markey and Robert Neighbors, Kim Gunderman, Ron Campbell, Gigi Logan, and others.

RIDESHARE MEETING POINTS

N Orange Co... Park-N-Ride, E side of Tustin Av just S of Lincoln Av, Orange.

S Orange Co... Ortega Plaza parking lot SE corner, Ortega Hwy/Rancho Viejo, San Juan Capistrano

Tustin ... Redhill Ave on N side (Fwy side) of Stater Bros Market just SW of Redhill Ave exit from Santa Ana Fwy

NEW MEXICO ADVENTURE

October 12-19, 2013

Albuquerque Balloon Fiesta, Santa Fe, Taos and Taos Pueblo, Acoma Sky Pueblo, Chaco Canyon, Los Alamos, and Bandelier National Monument are just some of the many



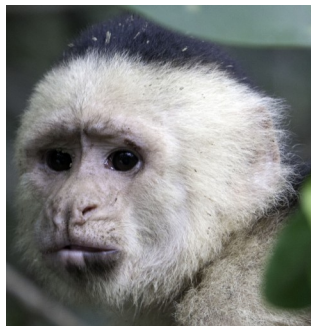
attractions on this fun filled exploration of the "Land of Enchantment". \$1195 for Sierra Club members (\$1250 for non-members). The trip includes lodging (double occupancy) for 7 nights; Admission fees for Balloon Festival, National Park and Monuments visits, Taos and Acoma Pueblo visits, and museum admissions for scheduled visits; breakfasts, two lunches, and several happy hours; and all transportation while in New Mexico. Most meals, and transportation to and from New Mexico not included. For information, contact Mike Sappingfield at mike-sapp@cox.net, or phone 949-768-3610. A \$500 deposit will reserve your place on the trip with remainder due July 1, 2013. Mail reservation request and \$500 deposit, payable to Sierra Sage--Sierra Club, and 2 SASE, to Mike Sappingfield at 26352 Via Juanita, Mission Viejo, California 92691. Leaders: Mary Morales, Mike & Patty Sappingfield

DESTINATION COSTA RICA

Feb 14-28, 2014

February 14-28, 2014 Angeles Chapter, Sierra Sage, OC

Sierra Singles Fourteen day tour from the Pacific beaches to the wild Northern Caribbean with stops at Manuel Antonio, Monteverde/Santa Elena, Arenal, Tortuguero and San Jose. Why watch a National Geographic special when you can live it? On layover days, hike and explore why this country is known for its enlightened



approach to conservation. Visit Volcanoes, rain forests, ecological reserves, wildlife refuges. See spectacular wildlife, hike trails and suspension bridges in the cloud forest. Sierra Club Member cost \$1650, Non member cost \$1750 (Sierra Club) includes mid range locally owned accommodations (dbl. occup.), private 21-passenger air-conditioned coach, some meals, happy hours, boat transportation to Tortuguero, driver gratuities and some tours. Group airfare extra. For itinerary, application, cancellation policy contact . Donna Specht 714-963-6345 donnaspecht@juno.com Michael Sappingfield 949-768-3610 mikesapp@cox.net

BLACK HILLS ADVENTURE V

JUNE 7-14, 2014

Ever want to go "where the buffalo roam, and the deer and antelope play"? South Dakota's Black Hills is the place to go. Custer State Park is world renowned for its large buffalo herd and at this time of the year, we can expect to see a lot of buffalo calves. Bring your camera and binoculars as pronghorn antelope, prairie dogs, elk, deer, wild burros, mountain goats, and bighorn sheep inhabit the park and are often visible. A jeep safari to the buffalo herds followed by a Chuckwagon BBQ will round out the experience. Other highlights include Mt. Rushmore, Crazy Horse Memorial, Jewel Cave and/or Wind Cave, hiking around Devils Tower and an optional trip to the Badlands. Our package includes seven nights lodging in South Dakota; transportation from Rapid City to the Black Hills and return and all transportation in the Black Hills; admission fees to all group activities; and happy hours for \$1295 for SC members, \$1350 for non-members. Participants are responsible for transportation to and from Rapid City and for meals. A \$500 deposit will hold your reservation (remainder due by April 1). For complete information, itinerary and application send 2 SASE to ldr: Mike Sappingfield (26352 Via Juanita, Mission Viejo, CA 92691) or email mikesapp@cox.net.

Michael Sappingfield 949-768-3610 mikesapp@cox.net

Patty Sappingfield 949-768-3610 solanese@cox.net



HOW TO FIND OUTINGS ON THE ANGELES CHAPTER WEB SITE!

Access the Chapter Web Site by using the url:

www.angeles2.sierraclub.org;

Click on **CALENDAR OF HIKES/TRIP/EVENT**

SIERRA CLUB ANGELES TRAVEL

on

Facebook

For Facebook fans, check out the Angeles Chapter's new facebook page called Sierra Clubs Angeles Travel. It contains pictures and information on all of the Angeles Chapter trips.

DIRECTORY OF SIERRA SAGE OFFICERS

Title	Name	Phone	Email
Chair	Duana Miller*	949-831-0890	duana103@hotmail.com
Vice Chair	Todd Clark*	714-803-0195	clarkta@hotmail.com
Secretary	John Kaiser*	714-968-4677	jkai39@gmail.com
Treasurer	Patty Sappingfield*	949-768-3610	solanese@cox.net
Outings Chair	Mike Sappingfield*	949-768-3610	mikesapp@cox.net
Asst Outings Chair	Todd Clark*	714-803-0195	clarkta@hotmail.com
Asst Outings Chair	Sylvie Coté*	949-547-2998	mlsylvie@hotmail.com
Membership Chair	Garry McCoppin	714-269-5078	mccoppin@cox.net
Conservation Chair	Glenn Pascall		gpascall@att.net
Communications	Mike Sappingfield*	949-768-3610	mikesapp@cox.net
Webmaster	Bob Hansen		awildtrout@gmail.com
Circulation Chair	Patty Sappingfield*	949-768-3610	solanese@cox.net
Political Chair	Sharon Koch*	949-717-7745	slkoch@ix.netcom.com
Chapter Rep	Sharon Koch*	949-717-7745	slkoch@ix.netcom.com
Program Chair	Sylvia Stevenson*	949-487-2660	sylvia_stevenson@yahoo.com
Executive Comm	Garry McCoppin*	714-269-5078	mccoppin@cox.net
FOF Task Force	Bill Holmes	949-496-5323	billten4@sbcglobal.net
Aliso Hobo Ridge TF	Penny Elia		greenpl1@cox.net
Santa Ana Mtns TF	John Kaiser*	714-968-4677	jkai39@gmail.com
San Onofre TF	Glenn Pascall		gpascall@att.net

* Denotes voting member of the Executive Committee

SIERRA SAGE MEETINGS.

- Global Warming Committee. Meets monthly in the community room at the REI Store in Tustin (I-5 and Jamboree on the 2nd Sunday of each month from 3 to 5 pm. Contact Laura Jackson at **laurajackson@cox.net**
- Preserve the Coastal areas of Orange County? Contact Penny Elia at **greenpl1@cox.net**
- Interested in electing environmentally supportive politicians into office locally? Contact **Sharon Koch** at **slkoch@ix.netcom.com**
- Want to keep the Santa Ana Mountains wild? Or even want to help maintain the trails in the San Mateo Wilderness Area? Contact John Kaiser at **jkai39@gmail.com**
- Still think the toll road through the Richard and Donna O'Neill Nature Conservancy, San Mateo Campground, and Trestle Beach is a bad idea? Contact Bill Holmes at **bill.holmes@att.net**



Subscription Information Sierra Sage Newsletter

1 Year: \$9.00

2 Years: \$15.00

Please mail your check to:

Sierra Sage

P. O. Box 6204

Laguna Niguel, CA 92607

Sierra Sage is scheduled for delivery on Jan 1, March, 1, May 1, July 1, Sept 1, and November 1 of each year. Please note that submission deadline is one month prior to publication.

Electronic copies are sent via email and are free. Just send an email to **mikesapp@cox.net and tell us you want the emailed Newsletter**

INTERNET ADDRESSES:

Angeles Chapter: www.angeles2.sierraclub.org

Sierra Sage: www.angeles.sierraclub.org/sage



**SIERRA
CLUB**
FOUNDED 1892

Sierra Sage of South Orange County
P. O. Box 6204
Laguna Niguel, CA 92607

First Class Mail

Subscribers.....Check the
“Last Issue” date on your
label and renew early.
Don’t forget to give us your
new address if you’re mov-
ing so you’ll get your Sage
at your new place on time!

Website:

<http://angeles2.sierraclub.org/sage/>

HIKE OF THE MONTH

Saturday, July 13, 2013 7:00 AM

0417-Sierra Sage of SOC Group Outing

O: San Jacinto Loop Hike

6 mi round trip, 950' gain and 8 mi round trip, 1750' gain. Two hikes from the top of the Palm Springs Tramway (8420') to Round Valley (9060') via Long Valley trail outbound and the ridge trail back. Longer route will include a hike to Wellmans Divide (9720'). Enjoy the cool 75 degree temperatures in mid summer, walking through the pine forests along cool mountain streams on the upper slopes of Mt San Jacinto. Meet 7 am at the south entrance of parking garage of the Irvine Transportation Center (Irvine Train Station, Ada & Barranca) or 9 am at tramway entrance. Bring money for tramway fee, lunch, water, lugsoles. For information, contact *Michael Sappingfield* 949-768-3610 mikesapp@cox.net.

Join the Sierra Club

Yes, I want to join! I want to help safeguard our nation's precious natural heritage. My check is enclosed.

Name _____

Address _____

City, State _____ Zip _____

F94Q -0417

Membership Categories (circle one)

	Individual	Joint
Introductory	\$15	
Standard	\$39	\$49
Supporting	\$75	\$100
Contributing	\$150	\$175
Life	\$1000	\$1250
Senior	\$25	\$35
Student	\$25	\$35
Limited Income	\$25	\$35

Send Check to Sierra Club, P. O. Box 421041, Palm Coast, FL 32142-1041 Membership not tax deductible