



Volume 24 Issue 3, Published Bimonthly by the Sierra Sage of South Orange County Group of the Sierra Club  
May 1, through June 30, 2016

**You are invited to join us at our bi-monthly meeting — Learn about the local Group of the Sierra Club, get an update on the status of San Onofre Power plant nuclear fuel disposal plans and more.**

**Feature Program: Thea Gavin —  
Adventure After 50: She lost her shoes and  
found new joy on the trail**

When she turned 50, Orange native Thea Gavin decided to try hiking barefoot as a remedy for chronic knee pain. Six years later, her knee still hurts every now and then, but she's discovered how much fun it is to hit the trails shoelessly, especially at Grand Canyon, where she had a chance to spend three (mostly barefoot) weeks at the North Rim in June 2011 as a National Park Service volunteer. Since then she has been back as often as possible, both on guided and solo hikes. Thea enjoys sharing what she has learned about hiking solo or with a group at Grand Canyon—with or without boots.



**WHERE:** Norman Murray Community and Senior Center  
24932 Veterans Way, Mission Viejo, CA

**WHEN:** 7:00 PM, Tuesday, May 24, 2016

**ROOM:** Juniper

**DIRECTIONS:**

**Northbound** on I-5, exit at La Paz, turn right onto La Paz, cross Marguerite Parkway and proceed over Oso Creek. Turn left onto Veterans Way and drive to the Murray Center Parking lot.

**Southbound** on I-5, exit at La Paz, turn left onto La Paz, cross Marguerite Parkway and Oso Creek. Turn left onto Veterans Way and drive to the Murray Center Parking Lot

You are invited to join us at the 17th Annual

# STARR RANCH BARBEQUE

Sunday, May 15, 2016  
1-5 PM

Starr Ranch, on over 4,000 acres set in the foothills east of Rancho Santa Margarita, is used primarily as an educational and research facility for the Audubon Society. We have partnered with them to conduct this fundraising activity. BBQ Activities include hiking, bird watching, listening to a live Band, great conversation, special activities, and enjoying tasty food. Deer often wander through the picnic area during the day.

Hamburgers, Veggie Burgers, salads, beans, potato chips, desserts, fresh fruit and all the trimmings will be provided. A beverage bar (donations welcome) for your beverage of choice is available.

Tickets are \$30 per person, Family Plan includes adults at the regular price of \$30 and all children 15 and under (1 or more) for a flat rate of \$15. To request tickets, send check, made out to **SIERRA SAGE**, and a SASE (Self Addressed Stamped Envelope) to Starr Ranch BBQ, c/o Patty Sappingfield, P. O. Box 524, Lake Forest, CA 92609. For more info or to volunteer to help, call Mike or Patty Sappingfield at 949-768-3610 or email [solanese@cox.net](mailto:solanese@cox.net). Map and directions are provided with each ticket.



## Waste Removal – The Final Frontier at San Onofre

By Glenn Pascall, Chair  
San Onofre Task Force  
Sierra Club Angeles Chapter

June 7, 2013 was a historic day in the history of the San Onofre nuclear plant near San Clemente. On that day, plant owner Southern California Edison announced it was being closed permanently.

The Sierra Club and other environmental and community groups had fought for this outcome, given a history of safety risks and technology failures at the plant. We had little time to celebrate, however, as it immediately became clear that over 3,000 rods of spent nuclear fuel were stored in cooling pools on-site and there was no approved remote storage location to which they could be moved.

This forced the focus onto moving ahead with the safest form of on-site storage. After the rods cool sufficiently, they can be placed in steel casks and stored in a massive concrete bunker. The process is known as dry storage, contrasted with wet storage in pools.

Last October, a unanimous vote of the California Coastal Commission approved the permit for the dry storage facility. The San Onofre Task Force was joined by Costa Mesa-based Orange County Coastkeeper and the Dana Point-based Ocean Institute in urging this action.

There has been a range of views by Sierra Club members on the best cask design. But there is agreement that dry storage is vastly safer. Respected nuclear expert Arjun Mahrajani estimates the worst-case incident in dry storage would be only 1.5 percent as risky as the worst-case incident in a fuel pool.

Fuel rods take at least five years to cool sufficiently for dry storage. The good news is that the plant has been closed since January 21, 2012 and the rods have been in pools for over four years. The offsetting factor is that many of these rods used high burn-up fuel, which takes longer to cool. However, the process of putting rods in casks can begin in the next few years.

For over 30 years the Sierra Club has supported identifying and licensing one or more “geologic repositories” - long-term remote storage locations to which spent nuclear fuel could be moved once and kept forever. The only exception to this policy is that where fuel is stored at an “at risk” nuclear plant site, it could be moved to another such site.

The problem with that approach is the increasing congestion of stored fuel at plants over the last 30 years. All waste storage is far beyond design capacity and today no plant wants to store fuel from another plant.

During the same 30 year period, the U.S. Department of Energy (DOE) has been responsible for developing remote, permanent storage but no site has been licensed. The reasons are many but the result has left the U.S. in an unacceptable position on nuclear waste management.

Recognizing this, the DOE is currently holding a series of hearings around the country on “consent-based siting” as an interim step. Communities would have to agree to a storage site being developed near them. Waste from several plants would be consolidated at such sites, and storage would be for an interim time period, not permanent. Sites might be managed by private operators as well as public agencies.

The next hearing on this topic is April 26 in Sacramento. Congressman Darrell Issa has called for a similar hearing to be held in south Orange or north San Diego county. The San Onofre Community Engagement Panel will focus on this topic at its June meeting in Dana Point.

The Angeles Chapter’s San Onofre Task Force will

follow these hearings closely. We will advocate for permanent, remote storage as the best approach and ultimate goal. We will listen carefully as standards for interim storage are put forth and will speak if we believe these standards are deficient in terms of environmental protection or environmental justice. We will report back to the National Sierra Club regarding what we are hearing.

Removing the waste is the final frontier at San Onofre. Nationally the topic is more alive than it has been in years. We intend to help move the discussion forward while insisting that standards be maintained at a level that will protect the environment and public health and safety.

We’ll provide regular updates at Starr Ranch on May 15 and at future Sierra Sage member meetings.

\*\*\*\*\*

## COMMENTARY FROM KATHRYN PHILLIPS, DIRECTOR, SIERRA CLUB CALIFORNIA

This letter begins with a sigh.

A large, loud sigh that implies disappointment. The kind of sigh that follows the news that a friend, someone you expected to be on your side, somebody who always had your back, does something disappointing and inexcusable.

It's also the kind of sigh that says "Here we go again."

In the last few weeks, one of the most important environmental laws for many Californians, the California Environmental Quality Act (CEQA), has been under attack at the legislature--again. That law requires developers to honestly disclose the environmental impacts of proposed development projects.

Some developers, including public agencies that build roads, clean up toxic waste, or plan the future, view CEQA as an inconvenience.

Honestly, they're right. It's inconvenient to tell the people who live near a freeway or the site of a new high rise exactly how much pollution that freeway or high rise might create or attract. It's inconvenient to then suggest and put into place measures to make sure that pollution from that road or building is reduced or mitigated.

Honesty and responsibility that take into account that other people share the commons are simply inconvenient.

It would be a much easier world if there was nobody else who mattered and each developer or city government could just build whatever at a whim. Much easier, that is, for the builder.

It wouldn't be much easier for the rest of us, the ones who have to breathe the air near the freeway or walk on the sidewalk near the giant parking garage attached to the high rise. It would be anarchy--polluted anarchy, at that.

And that's why Sierra Club California has been standing guard to protect CEQA from being weakened ever since we were formed. We do it for the rest of us, the Californians who won't rake in the profits or get the annual bonus or job promotion for pushing through a project as fast as possible. We do it for the Californians who have to live with the consequences of the project's impacts on air, water, traffic, walkability, noise, open space, natural areas, and wildlife.

A few weeks ago, the governor attempted to attach a CEQA exemption to funding for toxics cleanup at an abandoned lead battery smelter plant in Southern California. Environmental justice groups, local community groups, and statewide environmental groups (including Sierra Club California) pushed back. The governor (at least for now) backed down. The proposal for the money is moving forward without the CEQA exemption.

Score one for the public good.

# Outings



**Saturday, April 30, 2016 7:00 AM**

**0417-Sierra Sage of SOC Group Outing**

**O: Antelope Valley Poppy Preserve**

5 mile easy walk through the Poppy Preserve. We can expect to see a variety of wildflowers in addition to the California Poppies. Meet at 7:00 am at the Tustin Rideshare point (Exit I-5 at Redhill, park 1 block west of I-5 near the East side of the Stater Bros Parking Lot) or at 9:30 am at the Poppy Preserve visitor center (contact leaders for directions to the Poppy Preserve). We plan to carpool to and from the Preserve. Bring hat, water, lunch, hiking shoes or boots, camera and binoculars.

Michael Sappingfield 949-768-3610 [mikesapp@cox.net](mailto:mikesapp@cox.net)

Rich Maxey 949-310-5134 [richmaxey@yahoo.com](mailto:richmaxey@yahoo.com)

**Sunday, May 01, 2016 9:00 AM**

**0417-Sierra Sage of SOC Group Outing**

**O: Beach Hike, Doheny to Trestles**

8 miles, no gain, return by bus. Due to favorable low tide (0.2 ft. @ 11:54 AM) we will be able to walk the entire way on the beach. Meet 9:00 AM at Doheny State Park Road and Dana Harbor Drive, 1 block west of PCH in Dana Point. Park 1 block uphill from meet location. Bring water, hat, sunscreen, walking shoes (may get wet), lunch or \$\$ to buy lunch at pier, \$\$ for bus.

Rich Maxey 949-310-5134 [richmaxey@yahoo.com](mailto:richmaxey@yahoo.com)

Todd Clark 714-803-0195 [mlsylvie@hotmail.com](mailto:mlsylvie@hotmail.com)

**Wednesday, May 04, 2016 8:30 AM**

**0407-Orange/Sierra Sage**

**O: Laurel/Lizard Loop**

Moderate, 6 mi loop, 800' gain. Join us as we explore the newest official trail in the Laguna Coast Wilderness Park. We'll hike up Lower Laurel Cyn trail, join the new Lizard trail and on to meet Bommer Ridge. We will then take Bommer Ridge to Willow Canyon and hike down to our starting point. Meet 8:30 am, Willow Canyon parking lot (gate 6, \$3) on Laguna Canyon Rd 1/4 mi S of El Toro Rd junction. Bring water, hat, snack, hiking boots. Rain cancels.

Rich Maxey 949-310-5134 [richmaxey@yahoo.com](mailto:richmaxey@yahoo.com)

Linda Ledger 949-496-8029 [linda.ledger@cox.net](mailto:linda.ledger@cox.net)

**Saturday, May 07, 2016 8:00 AM**

**0417-Sierra Sage of SOC Group Outing**

**O: Trail Maintenance on the Indian Potrero Trail**

The Santa Ana Mountain Task Force (Orange County Group, Sierra Sage Group, San Geronimo Chapter) maintains trails in the San Mateo Canyon Wilderness. In May we will work on the Indian Potrero trail, which needs a considerable amount of brushing. Brushing starts in the first mile although most of it is beyond mile 2. Tools are provided. Bring work gloves, sturdy boots, water, lunch. Meet at the south Orange County ride share at 8:00 am to carpool to the trail head. Those coming from Riverside should contact the leader for a meeting time and location. Access to the trail head is via a private road and everyone must enter with the group. Rain or critical fire danger will cancel

John Kaiser 714-968-4677 [jkai39@gmail.com](mailto:jkai39@gmail.com)

Rich Maxey 949-310-5134 [richmaxey@yahoo.com](mailto:richmaxey@yahoo.com)

**Sunday, May 08, 2016 8:30 AM**

**0417-Sierra Sage of SOC Group Outing**

**O: Mesa Loop/Juaneno Trail**

5 mi, 200' gain. A leisurely paced "Mike's Hike" on Mother's Day into the east part of Casper's Park. Bring your mother and join us in exploring a little used area of the park. There should be lots of spring flowers. Meet 8:30 am at the South Orange County rideshare point (in front of Ball Park Pizza, 1 block east of I-5 on the Ortega hwy in San Juan Capistrano). Bring water, hat, munchies, sturdy shoes with some tread, camera and binoculars.

Heavy rain cancels. Leaders: Linda Ledger

Michael Sappingfield 949-633-6993 [mikesapp@cox.net](mailto:mikesapp@cox.net)

**Wednesday, May 11, 2016 8:30 AM**

**0407-Orange County /Sierra Sage**

**Black Star Cyn/Hidden Ranch**

10.2 mi, 1200' gain/loss. We will follow the stream to begin, with deposits of low-grade coal in the banks which was used to smelt the silver ore in Silverado Cyn. Then we climb into the Hidden Valley, now the Mariposa Preserve, an downhill the last half mile to Hidden Ranch, a Native American village, protected as a California Historical landmark. We'll visit the morteros, and have a lunch break before returning the way we came. Meet 8:30 am on Black Star Cyn Rd, (from Santiago Cyn Rd turn E on Silverado Cyn Rd, immediate L on Black Star, follow it to the gate & park). Bring 2-3 liters water, sun protection, lunch/snacks, hiking shoes/boots. Rain cancels

Linda Ledger 949-496-8029 [linda.ledger@cox.net](mailto:linda.ledger@cox.net)

Helen Maurer 949-768-0417 [7gables@cox.net](mailto:7gables@cox.net)

**Sunday, May 15, 2016 1:00 PM**

**0417-Sierra Sage of SOC Group Club Support Event  
Annual Starr Ranch BBQ**

This is a fundraising event to assist both the Sierra Sage group of the Sierra Club and the Audubon's Starr Ranch Sanctuary. The ranch, on over 4,000 acres set in the foothills east of Rancho Santa Margarita, is used primarily as an educational and research facility for the Audubon Society. BBQ Activities include hiking, bird watching, listening to a live Band, great conversation, special activities, and enjoying tasty food. Deer often wander through the picnic area during the day. Hamburgers, Veggie Burgers, salads, beans, potato chips, desserts, fresh fruit and all the trimmings will be provided. A beverage bar (donations welcome) for your beverage of choice is available. Tickets are \$30 per person, Family Plan includes adults at the regular price of \$30 and all children 15 and under (1 or more) for a flat rate of \$15. To request tickets, send check, made out to SIERRA SAGE, and a SASE (Self Addressed Stamped Envelope) to Starr Ranch BBQ, c/o Patty Sappingfield, P. O. Box 524, Lake Forest, CA 92609. For more info or to volunteer to help, call Mike or Patty Sappingfield at 949-768-3610 or email [solanese@cox.net](mailto:solanese@cox.net). Map and directions are provided with each ticket.

Michael Sappingfield 949-633-6993 [mikesapp@cox.net](mailto:mikesapp@cox.net)

Patty Sappingfield 949-633-6993 [solanese@cox.net](mailto:solanese@cox.net)

Todd Clark 714-803-0195 [mlsylvie@hotmail.com](mailto:mlsylvie@hotmail.com)

Sylvie Cote 949-547-2998 [mlsylvie@hotmail.com](mailto:mlsylvie@hotmail.com)

John Kaiser 714-968-4677 [jkai39@gmail.com](mailto:jkai39@gmail.com)

**Wednesday, May 18, 2016 8:30 AM**

**0407-Orange County /Sierra Sage  
O: Whiting Ranch/Billy Goat Trail**

Join us for a strenuous, moderately-paced 7 mi rt 1400' gain/loss hike up Serrano Canyon and Dreaded Hill to Four Corners and the Billy Goat Trail, returning through Sleepy Hollow with possible deer sighting. Bring 2 liters water, snacks, lugsoles, sun protection, \$3 for parking or annual pass. Meet 8:30 am at the Glenn Ranch Rd entrance in Lake Forest. Exit I-5/405 at Bake Pkwy, go E 5 mi, R on Portola, L at Glenn Ranch Rd ½ mi and L into parking lot. Rain cancels.

*Linda Ledger 949-496-8029 linda.ledger@cox.net*

*Jan Nemmert 714-962-4136*

**Saturday, May 21, 2016 7:00 AM**

**0417-Sierra Sage of SOC Group Outing**

**O: Sitton Peak**

9.5 miles, 2150' gain. We start the hike about 20 yards west of the Candy Store off Ortega Hwy along the Bear Canyon trail to four corners. From four corners we take the Sitton Peak trail climbing 300 feet to a flat area just below a 3250-foot high point to the north. Continuing on for an additional .5 miles we reach a saddle just below Sitton Peak from there we follow the informal trail up to the peak. After lunch we return to four corners then hike a slightly, more scenic, longer trail for part of the way back to the trailhead. Estimated time about 5 hours. Meet 7:00 AM at the South Orange County ride share point, Ortega Plaza SE corner of Ortega Hwy and Rancho Viejo Rd in San Juan Capistrano. Bring water, lunch, sunblock, hiking boots and hat.

*John Tevelein 949-854-0657 jctevelein@cox.net*

*Todd Clark 714-803-0195 mlsylvie@hotmail.com*



**Wednesday, May 25, 2016 9:00 AM**

**0407-Orange County Group Outing**

**O: Serrano Creek**

May 25 Wed Orange County/Sierra Sage O: Serrano Creek aka Fish Taco Hike: 4.7 mi ow, 590' gain (barely noticeable) for short hike; 11 mi rt, 690' gain for long hike. From Heritage Park in Lake Forest, we meander through Serrano Creek Park, cross Trabuco Rd and climb gently toward Foothill Ranch on a shady suburban trail. Short hike ends at Lake Forest Dr, where participants return to the starting point by public transportation (OCTA bus #177). Longer hike continues into Whiting Ranch following Live Oak Trail and returning on Serrano Creek Trail all the way back to Trabuco Rd with a stop for lunch (picnic or eatery) in Foothill Ranch en route. Meet 9:00 am at the Heritage Hill parking lot on Serrano Rd, just off Lake Forest Dr (west of the intersection of Lake Forest Dr & Trabuco Rd). Bring water, snack, lunch or lunch money (long hike); water, snack, bus fare (.75 seniors, \$2 adults) for the short hike. Walking shoes ok for both hikes. Rain cancels.

*Ed Maurer 949-768-0417 balois@cox.net*

*Helen Maurer 949-768-0417 7gables@cox.net*

**Wednesday, June 01, 2016 9:00 AM**

**0407-Orange County Group Outing**

**O: Laguna Coast Wilderness**

Moderate 8-10 mi, 1000-1200' gain hike. The leader will choose the route to the Nix Center with time to visit the Center and have

a leisurely break. Meet 9:00 am at the Willow parking lot, just S of the El Toro Rd & Laguna Cyn Rd junction. \$3 parking. Bring water, hat, sunscreen, hiking boots/lugsoles money for parking  
*Audrey Tomovich 949-830-8936 ourmeandog@yahoo.com*  
*Sylvia Stevenson 949-616-2765 sjstevenson2828@yahoo.com*

**Saturday, June 4, 2016 8:00 AM (Time Tentative)**

**0417-Sierra Sage of SOC Group Outing**

**O: Trail Maintenance in San Mateo Canyon Wilderness**

The Santa Ana Mountain Task Force (Orange County Group, Sierra Sage Group, San Geronio Chapter) maintains trails in the San Mateo Canyon Wilderness. Volunteers, male and female, keep the trails open and safe. The specific work location is chosen each month based on current needs. Work involves lopping or sawing to clear the corridor and repairing tread as needed; those wishing to concentrate only on lopping are welcome. Tools are provided. Bring work gloves, sturdy boots, water, lunch. Typically we meet at the south Orange County ride share at either 7:30 or 8:00 am depending on the trail head destination for that month. Rain or critical fire danger will cancel. To receive email announcements with details of each month's activity, send an email to Leader:

*John Kaiser 714-968-4677*

*jkai39@gmail.com*

*Rich Maxey 949-310-5134 richmaxey@yahoo.com*



**Wednesday, June 08, 2016 9:00 AM**

**0407-Orange County Group Outing**

**O: Buck Gully**

5 mi, 300' gain. Explore this sylvan wilderness along a stream with elegant bridges in Corona del Mar. Meet 9:00 am at the corner of Poppy and 5th Ave, off PCH on Poppy in Corona del Mar. Park on street. Bring water, walking shoes, snack.

*Michael Sappingfield 949-633-6993 mikesapp@cox.net*

*Gail Roy 949-854-3820 gfroy@uci.edu*

**Saturday, June 11, 2016 8:30 AM**

**0417-Sierra Sage of SOC Group Outing**

**O: Lion Canyon Waterfall Hike**

This hike to peaceful Lion Falls aka Chiquito Falls is a 9 mile out and back with 2900 feet of gain. We will start at the parking lot across from the Candy Store on Ortega Highway. Adventure pass needed to park. We will pass San Juan Falls and descend into a shaded oak canyon. The hike then ascends onto a ridge with full sun exposure but with panoramic views. We will lunch as the falls and return via the same route. Meet at 7:45 at the south county ride share or 8:30 at the Candy Store. Bring lunch, 2 liters water, hiking boots, and sun hat.

*Linda Ledger 949-496-8029 linda.ledger@cox.net*

*John Tevelein 949-854-0657 jctevelein@cox.net*

**Wednesday, June 15, 2016 9:00 AM**

**0407-Orange County Group Outing**

**O: Crystal Cove beach walk**

6 mi, 200' gain. An early summer stroll along the beach & bluff top in this beautiful State Park in Newport Beach. Optional stop at Ruby's Date Shack. Meet 9:00 am at the SW corner of PCH and Cameo Shores. Park on Cameo Shores or Cameo Highlands. Bring water, walking shoes.

*Peter R Height 949-713-4569 prheight1@cox.net*

*Gail Roy 949-854-3820 gfroy@uci.edu*

**Saturday, June 25, 2016 8:30 AM**

### 0417-Sierra Sage of SOC Group Outing

#### O: Falcon-New San Juan Loop

Join us to hike the Falcon-San Juan Loop, near Blue Jay Campground in the Santa Ana Mountains. 5.5 mile hike 300" gain/loss. This is an opportunity to hike some little used trails high up in the Santa Anas. Meet us at 8:30 am at the South Orange County Rideshare Point (near the Ball Park Pizza restaurant, in Ortega Plaza 1 blk east of I-5 in San Juan Capistrano). We plan to carpool to the trailhead in Blue Jay Campground. FSP or Golden Age Card required for parking at campground. If you prefer to meet us at the Trailhead, advise Mike in advance. Bring hat, 2 qts water, munchies,

Michael Sappingfield 949-633-6993 [mikesapp@cox.net](mailto:mikesapp@cox.net)

John Kaiser 714-968-4677 [jkai39@gmail.com](mailto:jkai39@gmail.com)

**Saturday, June 25, 2016**

### 0417-Sierra Sage of SOC Group Outing

#### O: Tour Aliso Creek Water Treatment Facility

Join us for a rare public opportunity to learn first-hand about this vital community facility. Observe how our precious water supply is affected by this process. Meet 9:00 AM in parking lot of Aliso Woods Canyon Wilderness Park to carpool down gated road to treatment plant. Parking lot fee, \$3.00, bring own drinking water, walking shoes, and children when accompanied by adults are welcome to join us. Allow about 2 hours for tour.

Silvia Stevenson 949-616-2765 [sjstevenson2828@yahoo.com](mailto:sjstevenson2828@yahoo.com)

Margot Lowe

**Saturday, July 9, 2016, 7:00 AM**

### 0417-Sierra Sage of SOC Group Outing

#### O: San Jacinto Wilderness Loops

Enjoy the cool 75 degree temperatures in mid-summer, walking through the pine forests on the upper slopes of Mt. San Jacinto. Two hikes from the top of the Palm Spring Tramway (8420') to Round Valley (9060') will be offered concurrently. Both hikes include the Round Valley loop. Longer route (8 miles round trip, 1750' gain) will include a hike to Wellmans Divide (9720') and back. Shorter route will be a more casual pace (6 miles round trip, 950' gain). Meet 7:00 AM at the south entrance of parking garage of the Irvine Transportation Center (Irvine Train Station, Ada & Barranca), or 9:00 AM at the tramway entrance. Bring money for tramway fee, lunch, water, hat, light jacket, sunglasses, sunscreen, hiking shoes or boots. Rain cancels.

Michael Sappingfield 949-633-6993 [mikesapp@cox.net](mailto:mikesapp@cox.net)

John Kaiser 714-803-4677 [jkai39@gmail.com](mailto:jkai39@gmail.com)

Linda Ledger 949-496-8029 [linda.ledger@cox.net](mailto:linda.ledger@cox.net)

Rich Maxey 949-310-5134 [richmaxey@yahoo.com](mailto:richmaxey@yahoo.com)

## RIDESHARE MEETING POINTS

**S Orange Co...**Ortega Plaza parking lot SE corner, Ortega Hwy/Rancho Viejo, San Juan Capistrano

**Tustin ...** Redhill Ave on N side (Fwy side) of Stater Bros Market just SW of Redhill Ave exit from Santa Ana Fwy

## OCSS CONDITIONING HIKES - EVERY TUES/THUR @ 6:30 PM

**O: IRVINE TURTLE ROCK.** Easy/Moderate/Tiger paced hikes, 4-7 mi rt on hilly trails. Bring Water, light hiking boots. 405 Fwy, exit S at University/Jeffery, L on Ridgeline, L on Turtle Rock, pass Sunnyhill, L into parking lot of Turtle Rock Community Park, Ldrs, John LaRue, Kim Gunderman, and others.

## Angeles Chapter – Sierra Club Meet Sierra Sage Outings Leaders



### RICH MAXEY

Meet one of our newest leaders, **Rich Maxey**. Rich became a certified leader approximately 2 years ago and is leading several hikes each month. He prefers hikes in the 6-11 mile range, with some elevation gain. He also was elected to the Sierra Sage Groups Executive Committee last fall and has taken on the task to improve our publicity of hikes and events in South Orange County.

\*\*\*\*\*

## HIKING WITH CHILDREN

Some thoughts about having fun hiking with your children and grandchildren.

- Very young — Consider taking them with you in a child carrier or backpack. If so, and they are walking, let them out to walk around often but be prepared to put them back in the pack
- Ages 5-12 — Children in this age group can walk up to 4 or 5 miles. They are very interested in everything so stop often and let them look at the strange things they will see.
- Ages 13 & up. They can do anything the adults can do, and often more.
- Bring water, snacks, etc. for both the kids and you.
- Bring sunblock, and a hat for each person as you may well be in the sun for most of your hike.
- Bring a camera and even binoculars so you and your young one can enjoy what you see.
- Check with the hike leader and make sure the hike is paced for kids.



## Advance Notice

### Angeles Chapter and Sierra Sage Group Present

#### Arizona Slot Canyon and Native American Sites April 29-May 7th 2017

Arizona is famous for rugged landscapes and historical sites. This is your opportunity to visit many of these sites. Landscapes include **Sunset Crater, Meteor Crater, Petrified Forest National Park, Sedona, Antelope Slot Canyon** (one of the most photographed), and **Monument Valley**. Native American sites include **Wupatki National Monument, Navajo National Monument and Betatakin Cliff Dwelling, Canyon DeChelly, Montezuma Castle, Hubbard Trading Post & Heard Museum. Native American Guides will provide tours of Antelope Canyon, Monument Valley and Canyon De Chelly.** Some optional hikes are included usually 3 to 6 mi rt, up to 700' gain.

Includes transportation, snacks, 8 nights' accommodations (2 per room/2 beds), most breakfasts, and all scheduled admissions and guide fees. Trip does not include air fare to and from Phoenix, AZ and most lunches and all dinners nor does it cover optional events.



We are still in the planning process and have not determined the cost of the trip just yet.

We will begin accepting applications on June 1, 2016. For more information, email Mike Sappingfield at [mikesapp@cox.net](mailto:mikesapp@cox.net) on or after May 31. Application Forms and the Itinerary, with costs, will be available on May 31. We look forward to seeing you.

**Trip Leaders: Mike Sappingfield  
& Linda Ledger**



## Advance Notice

### Angeles Chapter and Sierra Sage Group Present

#### Wonders of Oregon II July 16- July 23, 2017

Wikipedia describes Oregon as: "...diverse, with a windswept Pacific beaches, volcano studded Cascade Mountains, abundant waterfalls, dense evergreen forests, ... and high desert sprawling across much of its east all the way to the Great Basin". Come join us on our 8 day, 7 night fly-drive trip as we explore this fascinating and interesting State.

You will start by enjoying the beaches, lighthouses, and historical sites of the **Oregon Coast** before moving inland along the magnificent **Columbia River Gorge** to explore the incredible waterfalls, fun hiking and even touring **Bonneville Dam and Fish Ladder**. The last part of the trip will include **Mt. Hood, Newberry Crater and its amazing obsidian flows, Lava River Cave, and last, but not least, Crater Lake**.



Trip includes all transportation in Oregon, 7 nights lodging, all admissions to scheduled places, and tours and most breakfasts and some picnic lunches.

Trip does not include air fare to and from Portland, Oregon and most lunches and all dinners, nor does it include optional items.

The trip is still in the final stages of planning. Therefore the actual trip cost has not been determined as of yet. We expect to complete that process and have the full itinerary and application form, including all costs by end of June, 2016. We will be accepting applications on or after July 1, 2016. If you desire the information in June, email Mike Sappingfield at [mikesapp@cox.net](mailto:mikesapp@cox.net).

**Leaders: Mike Sappingfield, Patty Sappingfield**



## Advance Notice

### Angeles Chapter and Sierra Sage Group Present Southern New Mexico Fall 2017

We are currently planning a trip to Southern New Mexico in the Fall of 2017. It will be either the last part of September or the first part of October. **We plan to have all the planning done by November 1st if this year. If this trip interests you, send us an email stating your interest and contact information.** We will establish a file of interested people so that we can notify them of all the information relating to the trip, including the dates, the actual itinerary and the costs. We will even send out the application forms at that time.

The trip will be a week long, starting on a Saturday flight out of Southern California to **El Paso**, Texas and returning the following weekend. Highlights are **Carlsbad Caverns**, with maybe a return at twilight to watch the bats fly out to feed. Other stops include **Guadalupe National Park, Roswell, Lincoln County (Billy the Kid country), Las Cruces, White Sands National Monument, Alamogordo, Hatch**, and possibly a day in **Silver City**, an 19th century mining town.

The trip will include all lodging, all transportation from the El Paso Airport and return and all scheduled stops in between. All admissions to scheduled events are also included. Most breakfasts will be included, and some picnic lunches. Dinners and the remainder of the lunches will be the responsibility of the traveler. Air fares are extra, but we do plan to make group airplane arrangements, with the cost the responsibility of the traveler.

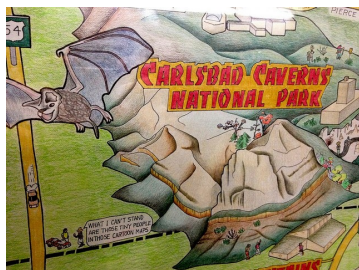
#### LEADERS: MIKE & PATTY SAPPINGFIELD

Email: Mike — [mikesapp@cox.net](mailto:mikesapp@cox.net)

Email: Patty — [solanese@cox.net](mailto:solanese@cox.net)

Address: Sierra Sage New Mexico Trip,  
P.O. Box 524  
Lake Forest, CA 92609

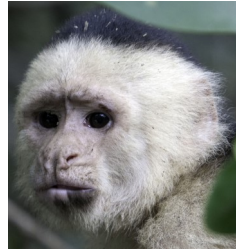
Phone, for information: 949-633-6993



## ANGELES CHAPTER AND OCSS AND SIERRA SAGE PRESENT

### Destination Costa Rica

**Saturday, October 01, 2016 to  
Friday, October 14, 2016**



Fourteen day tour from the Pacific beaches to the wild Northern Caribbean with stops at Manuel Antonio, Monteverde/Santa Elena, Arenal, Tortuguero and San Jose. Why watch a National Geographic special when you can live it? On layover days, hike and explore why this country is known for its enlightened approach to conservation. Visit Volca-

noes, rain forests, ecological reserves, wildlife refuges. Spend 3 special days in Tortuguero Village where the first awakening of sea turtle conservation began. **NOTE: EARLY BIRD SPECIAL! MEMBERS WHO SIGN UP BEFORE JUNE 1 WILL RECEIVE \$200 OFF THE TRIP COST.** Sierra Club Member cost \$1950, Non member cost \$2050 includes mid range locally owned accommodations (double occupancy), private 22-passenger air-conditioned coach, all breakfasts, happy hours, round trip boat transportation to Tortuguero, driver gratuities and 3 eco tours. Group airfare extra. **For itinerary, application, cancellation policy contact Co Leader: Donna Specht.**

Trip Co-Leaders:

Donna Specht 714-963-6345

[donnaspecht@juno.com](mailto:donnaspecht@juno.com)

Michael Sappingfield 949-768-3610 [mikesapp@cox.net](mailto:mikesapp@cox.net)



## DIRECTORY OF SIERRA SAGE OFFICERS

<b>Title</b>	<b>Name</b>	<b>Phone</b>	<b>Email</b>
Chair	Mike Sappingfield*	949-768-3610	mikesapp@cox.net
Vice Chair	Duana Miller	949-831-0890	duana103@hotmail.com
Secretary	John Kaiser*	714-968-4677	jkai39@gmail.com
Treasurer	Patty Sappingfield*	949-768-3610	solanese@cox.net
Outings Chair	Todd Clark	714-803-0195	clarkta@hotmail.com
Outings Chair	Sylvie Coté	949-547-2998	mlsylvie@hotmail.com
Membership Chair	Linda Ledger*	949-496-8029	linda.ledger@cox.net
Communications	Mike Sappingfield*	949-768-3610	mikesapp@cox.net
Webmaster	Bob Hansen		awildtrout@gmail.com
Circulation Chair	Patty Sappingfield*	949-768-3610	solanese@cox.net
Political Chair	Sharon Koch*	949-717-7745	slkoch@ix.netcom.com
Chapter Rep	Glenn Pascall		gpascall@att.net
Alt Chap Rep	Mike Sappingfield	949-768-3610	mikesapp@cox.net
Program Chair	Sylvia Stevenson*	949-616-2765	sjstevenson2828@yahoo.com
Facebook Manager	Vanessa Andronaco	949-585-3646	vglotzbach@gmail.com
Media Contact	Rich Maxey*	949-310-5134	richmaxey@yahoo.com
Aliso Hobo Ridge TF	Penny Elia		greenpl@cox.net
Santa Ana Mtns TF	John Kaiser*	714-968-4677	jkai39@gmail.com
San Onofre TF	Glenn Pascall		gpascall@att.net

\* Denotes voting member of the Executive Committee

### SIERRA SAGE MEETINGS.

- Executive Committee meetings are open to all members of the Sierra Club who reside in South Orange County. Meetings are on the 2nd Thursday of each month. Contact Mike Sappingfield at [mikesapp@cox.net](mailto:mikesapp@cox.net) for date, time and directions.
- Preserve the Coastal areas of Orange County? Contact Penny Elia at [greenpl@cox.net](mailto:greenpl@cox.net)
- Interested in electing environmentally supportive politicians into local offices? Contact Sharon Koch at [slkoch@ix.netcom.com](mailto:slkoch@ix.netcom.com)
- Want to keep the Santa Ana Mountains wild? Or even want to help maintain the trails in the San Mateo Wilderness Area? Contact John Kaiser at [jkai39@gmail.com](mailto:jkai39@gmail.com)



### Subscription Information Sierra Sage Newsletter

<b>Subscription Rates;</b>	<b>1 Year</b>	<b>\$ 9.00</b>
	<b>2 Years</b>	<b>\$15.00</b>

**Please mail your check to:**

**Sierra Sage  
P. O. Box 6204  
Laguna Niguel, CA 92607**

**Sierra Sage is scheduled for delivery on Jan 1, March 1, May 1, July 1, Sept 1, and November 1 of each year. Please note that submission deadline is one month prior to publication.**

*Electronic copies are sent via email and are free. Just send an email to [mikesapp@cox.net](mailto:mikesapp@cox.net) and tell us you want the emailed Newsletter*

### INTERNET ADDRESSES:

**Angeles Chapter:** [www.angeles.sierraclub.org](http://www.angeles.sierraclub.org)

**Sierra Sage:** [www.sierrasage.org](http://www.sierrasage.org)

## Trail Notes: Upper Holy Jim, from the Waterfall to Bear Springs

### By Mike Sappingfield

This is a new column, with various guest authors, giving their take on their favorite Trails in Orange County.

Many of us have hiked in to the Holy Jim Falls. However, few of us have continued upwards to Bear Springs and possibly on to Santiago Peak, the highest peak in Orange County. On April 27th, 10 intrepid hikers did hike to Bear Springs and back.

The trail past the turnoff to the Holy Jim falls was a revelation. First, it was one of the best designed and constructed trails that we have seen recently. The trail is a consistent 10% all the way to the springs, approx. 2000 + feet in 4 miles. Trail width was about 18" wide and flat most of the time. Thus the hike was relatively easy and we didn't even realize how much elevation we were gaining. Going down was equally easy walking with no steep spots. Very easy on the legs.

The hike up would have been a lot quicker but for the incredible array of wildflowers, causing us to stop to admire them and to take pictures. Flowers included Chaparral related ones like Chamise, Ceanothus, Virgin's Bower (Clematis), as well as more common wild flowers, such as Monkey Flower, Mexican Pink, Mariposa's, Bush Poppies, Lupines, Golden Stars, Yarrow, Our Lord's Candle Yucca's in bloom, Chinese Houses, Canterbury Bells, Nightshade, Indian Paintbrush, White Fairy Lantern, Yerba Buena, Woolly Blue Curls, and many, many more.

There were many stretches of the trail there were well shaded, while other portions were exposed to the sun.

We turned around at Bear Springs where we reached the Main Divide Road. There is a concrete tank to hold the water with a spout with a handle — probably to add water to the hot radiators in the cars and trucks going to the towers.

All told, a fun and beautiful day!



## Website:

<http://sierrasage.org>

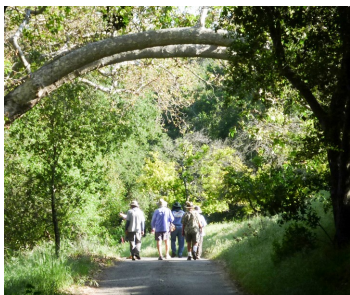
### HIKE OF THE MONTH

## STARR RANCH BBQ

### Sunday, May 15, 2016

Want to hike? Come to our annual Starr Ranch BBQ and enjoy the many hikes and bird walks scheduled. There are easy ones of a mile or two and some more strenuous ones. Between hikes, you can enjoy the exhilarating sounds of the live band, munch on the scrumptious food or just enjoy the rural nature of the Starr Ranch Sanctuary.

For more information, including ticket info, check out page two of this newsletter.



## Join the Sierra Club

Yes, I want to join! I want to help safeguard our nation's precious natural heritage. My check is enclosed.

Name \_\_\_\_\_

Address \_\_\_\_\_

City, State \_\_\_\_\_ Zip \_\_\_\_\_

**F94Q -0417**

Membership Categories (circle one)

	Individual	Joint
Introductory	\$15	
Standard	\$39	\$49
Supporting	\$75	\$100
Contributing	\$150	\$175
Life	\$1000	\$1250
Senior	\$25	\$35
Student	\$25	\$35
Limited Income	\$25	\$35

Send Check to Sierra Club, P. O. Box 421041, Palm Coast, FL 32142-1041 Membership not tax deductible