



Volume 26 Issue 5 Published Bimonthly by the Sierra Sage of South Orange County Group of the Sierra Club  
September 1, through November, 2018

## **We invite you to join us as we share with you our recent trip to the Great Smoky Mountains.**

We are all used to traveling to the Santa Ana, the San Jacinto, the Sierra Nevadas, and even the Rocky Mountains. The Great Smoky Mountains are very different with very different trees and flowers, not to mention much more moisture. For 2 of the past three years, we have led a group of 22 Sierra Club members to explore and enjoy the Great Smokys. This is your opportunity to share it with them. All pictures were taken on those two Sierra Club trips.

**WHERE:** Norman Murray Community and Senior Center  
24932 Veterans Way, Mission Viejo, CA

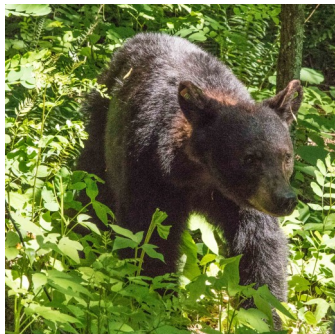
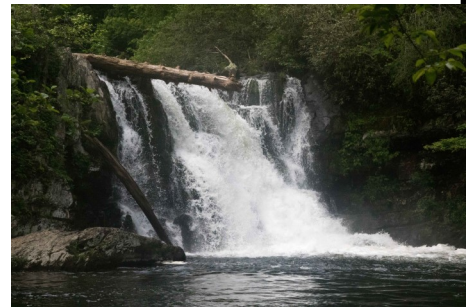
**WHEN:** 7:00 PM, Tuesday, September 25 2018

**ROOM:** Juniper

### **DIRECTIONS:**

**Northbound** on I-5, exit at La Paz, turn right onto La Paz, cross Marguerite Parkway and proceed over Oso Creek. Turn left onto Veterans Way and drive to the Murray Center Parking lot.

**Southbound** on I-5, exit at La Paz, turn left onto La Paz, cross Marguerite Parkway and Oso Creek. Turn left onto Veterans Way and drive to the Murray Center Parking Lot





**THE SIERRA CLUB ANGELES CHAPTER PRESENTS**  
**"Dr. Keeling's Curve," a play about the scientist who**  
**first discovered why the world was becoming**  
**one hot mess.**

**7 pm Sept. 30 at The Broad Theatre in Santa Monica**

What if you could share the story of global warming on stage rather than on Facebook? The Sierra Club invites you to a one-time-only performance of "Dr. Keeling's Curve." Mike Farrell of the classic TV show "MASH" plays the scientist who charted the rise in carbon dioxide levels over time.

Enjoy this timely, accessible, entertaining and oh-so important play performed for the first time with the grand stage and intimate seating of **The Broad Stage** in Santa Monica

**Stay for the Climate Action Reception after the play and meet Mike Farrell as well as Jet Propulsion Laboratory's climate change expert Peter Kalmus, author of "Being the Change: Live Well and Spark a Climate Revolution."**

Farrell, Kalmus, playwright George Shea and other panelists -- actor Ed Begley Jr. and Terry Tamminen of the Leonardo DiCaprio Foundation -- will lead a discussion on climate change at a Climate Action Reception after the play. Limited number of reception tickets available.

**\$100, orchestra seat and reception**

**\$55, orchestra and box seats**

**\$45, balcony**

**\$45 reception ticket can be added to any performance ticket in the orchestra, box seats or balcony.**

For more information about Ordering Tickets by Mail, Becoming a Sponsor and Volunteer Opportunities for this event, go to **DKCtickets.org**

## **DIRECTIONS**

Get on the 10 west to the Lincoln Blvd exit NORTH (right). Turn right on Santa Monica Blvd. The theatre is on Santa Monica Blvd between 10th and 11th Streets. The entrance to the parking lot is off of Santa Monica Blvd.

*Contributions to the Sierra Club Angeles Chapter are not tax-deductible; they support our effective, citizen-based advocacy and lobbying efforts.*

# Outings



**Wednesday, September 05, 2018 9:00 AM**

## **0407-Orange County Group Outing**

### **O: Whiting Ranch**

Roughly 5 mi, 800 gain hike in Whiting Ranch. We will meet in the secondary Ranch parking lot on Glenn Ranch Rd. From I-5, go E on El Toro to Portola, turn L, then R on Glenn Ranch Rd. Parking lot is on the L. The hike will take us by some lovely oak trees and up to the Four Corners area, where we will have an opportunity to break and enjoy the view. Meet 9:00 AM. Bring water, snack, hiking boots. \$3.00 for parking and \$ for an optional lunch afterwards.

Audrey Tomovich (949) 830-8936 [ourmean-dog@yahoo.com](mailto:ourmean-dog@yahoo.com)

Michael Sappingfield 949-633-6993 [mikesapp@cox.net](mailto:mikesapp@cox.net)

**Saturday, September 08, 2018 11:00 AM**

## **0407-Orange County Group Outing**

### **O: Leader Training Day and Hike**

Leadership Training candidates come and join experienced leaders on this easy pace 4-5 mile, 500' gain hike in the hills of Irvine. Prior to the hike, we will have an introduction about Angeles Chapter Leadership Training. When the hike begins, we'll discuss trailhead talk, group management issues, Leave No Trace, safety, ten essentials, etc. There will be plenty of opportunities to ask questions. After the hike, more Q and A. how to pick your provisional hike, assistant leader, participants. If you have already attended Leadership Training and just don't know how to complete the requirements, come join us, we can help. You can also sign up for the October 6, Leadership Training Seminar at this event. Deadline for Leadership Training Seminar registration is September 22. Meet 11am at Turtle Rock Community Park picnic tables, Not at the Tennis Courts. Directions: 405 Fwy, exit S at University/Jeffrey, L on Ridgeline, L on Turtle Rock, pass Sunnyhill, L into parking lot of Turtle Rock Community Park. Bring snacks or lunch, hiking boots, water, hat for the hike. Leaders: Todd Clark, Sylvie Cote, Dennis Loya, Donna Specht, Sherri Sis-son

Donna Specht (714) 963-6345 [donnaspecht@juno.com](mailto:donnaspecht@juno.com)  
Todd Clark (714) 803-0195 [clarkta@hotmail.com](mailto:clarkta@hotmail.com)  
Sylvie Cote (949) 547-2998 [msylvie@hotmail.com](mailto:msylvie@hotmail.com)



**Wednesday, September 12, 2018 9:00 AM**

## **0407-Orange County Group Outing**

### **O: Crystal Cove Beach Walk**

An easy walk along the beach & bluff top in this beautiful State Park. Seven miles, 200' gain. Optional stop at Ruby's Date Shack for lunch. Meet 9:00 am at the SW corner of

PCH & Cameo Shores, in Corona del Mar. Park along frontage road just inside entrance to Cameo Shores, or park on Cameo Highlands. Bring water, snack, walking shoes. Bathroom in park, not at trailhead. Ldr: Pete Height Asst: Kathy Fisher.

Peter Height (949) 713-4569 [prheight1@cox.net](mailto:prheight1@cox.net)

**Wednesday, September 19, 2018 9:30 AM**

## **0407-Orange County Group Outing**

### **O: Bolsa Chica Ecological Reserve Hike**

Easy paced, reasonably flat 5 mi hike, approx. 3 hrs. New-comers welcome. Enjoy the natural beauty of Bolsa Chica, one of the last remaining wetland ecosystems in Southern California. Meet 9:30 am. From Warner Avenue in Huntington Beach, turn S on Bolsa Chica Street to the end of the street and trailhead (Brightwater). Park on the street. Bring camera, water, sun protection, hat, light hiking boots; rain does not cancel. No Bathrooms at the trailhead. Ldr: Donna Specht, Asst: Kathy Fisher.

Donna Specht (714) 963-6345 [donnaspecht@juno.com](mailto:donnaspecht@juno.com)

**Wednesday, September 26, 2018 9:00 AM**

## **0407-Orange County Group Outing**

### **O: Dana Point Harbor to Strands Beach**

Moderately-paced 6.7 mi partial loop walk with 600' gain/loss. Walk begins up stairs to the Bluff Trail where we have views of beautiful Dana Point Harbor and beyond. Proceed onto dirt path around the headlands and down stairs to the Strands beach where we walk along the water's edge. Next we walk up alongside the Monarch Beach Golf Course. We later head back down to the sand and return via more stairs to head back to the harbor. Meet 9:00 am at the parking lot at the NW corner of Golden Lantern and Dana Point Harbor Drive. Bring 1 qt water, snacks, good walking shoes. Water refills and bathrooms available along the way. Lunch in harbor following walk for those interested.

Linda Ledger (949) 444-1285 [linda.ledger@me.com](mailto:linda.ledger@me.com)



**Wednesday, October 03, 2018 9:00 AM**

## **0407-Orange County Group Outing**

### **O: Laurel, Camarillo, South Stagecoach Loop**

5.5 mi, 500 gain. Route includes a moderate climb up Lower Laurel Cyn Trail, then continuing on an easy Upper Laurel Cyn Trail under the Toll Rd, then descending on Camarillo Trail to S Stagecoach Trail, under the Toll Rd & back to the Willow Staging Area. Meet 9:00 AM, so give yourself time to park & pay \$3 parking fee (or OC Park Pass). From I-5 Fwy, W on El Toro Rd to the junction of Laguna Cyn Rd, turn L. Entrance is about 100 yds on your R into the Willow parking area. Bring 1 qt water,



**Saturday, October 06, 2018 8:00 AM (Time Tentative)**

**0417-Sierra Sage of SOC Group Outing**

**O: Trail Maintenance in San Mateo Canyon Wilderness**

Volunteers, male and female, from the OC Group, Sierra Sage Group, and the Gorgonio Chapter maintain trails in the San Mateo Canyon Wilderness on a monthly basis. The location is selected each month based on current needs. No experience is needed, only a willingness to work. Tools and instructions are provided. To receive announcements with details of each month's activities contact Leader John Kaiser (jkai39@gmail.com). Co-leader: Rich Maxey John Kaiser (714) 968-4677 jkai39@gmail.com

**Wednesday, October 10, 2018 8:30 AM**

**0407-Orange County Group Outing**

**O: Peters Canyon Loop Hike**

Easy-paced 6 mi rt, 700' gain/loss loop hike over rolling hills. We'll see how the park has recovered from the fire just one year ago. Returning we'll enjoy the shady canyon beneath the willow, black cottonwood, and sycamore. Meet 8:30 am at the corner of Jamboree and Canyon View (from I-5 Fwy, N on Jamboree, or from 55 fwy, E on Chapman, S on Jamboree. Then take Canyon View into parking area.) Bring water, snacks, light hiking boots, \$3 for parking or OC Parks Permit. Rain, park closure (www.ocparks.com), cancels. Ldr: Sharon Kirk. Asst: Audrey Tomovich. Sharon Kirk (714) 376-3197 sl.kirk@sbcglobal.net

**Saturday, October 13, 2018 8:30 AM**

**0417-Sierra Sage of SOC Group Outing**

**O: Ancestor's Trail Hike**

5.5 mile, 450' gain/loss hike in the backcountry of San Onofre State Beach. The Ancestors Trail is a single track hiking/biking trail from the ridge winding its way down to a creek bed and then downstream for a couple of miles before working up to the ridge line and following high tension line access roads back to the start. Meet at 8:30 am at the southeast end of La Pata in San Clemente at the dog park. Lots of parking available on the side of the road. Bring at least a quart (liter) of water and munchies. Hat is desirable as trail is open to the sun.

Michael Sappingfield (949) 633-6993 mikesapp@cox.net

**Sunday, October 14, 2018 4:45 PM**

**0417-Sierra Sage of SOC Group Outing**

**O: Signal Hill Sunset Hike**

Join us on a moderate 4 mile, 750 gain loop hike exploring the Signal Hill Trail System. Our hike will make maximum use of the walking trails inside the private residential areas before they close to the public at Sunset. Enjoy 360-degree views to the ocean, San Pedro, Downtown LA and Long Beach, and learn a little about the history of Signal Hill. After our hike, those interested can join us for refreshments at Mothers Market Cafe and outdoor patio.

Karen Deweese (562) 270-3487 kldeweese@me.com

**Wednesday, October 17, 2018 8:30 AM**

**0407-Orange County Group Outing**

**O: Serrano Creek Trail**

Short hike- 4.7 mi, 590' gain OR Long hike- 11 mi, 690' gain. Both starting at Heritage Park in Lake Forest, we meander on the trail in Serrano Creek Park, cross Trabuco Rd and continue along a shady suburban trail, climbing gently toward Foothill Ranch. The short hike ends before we cross Rancho Pkwy, and participants return to the starting point by public transportation (OCTA Bus #177.) The longer hike

continues into Whiting Ranch following Live Oak Trail and returning on Serrano Creek Trail all the way back to Trabuco Rd with a stop for lunch (picnic or eatery) in Foothill Ranch en route. Meet 8:30 am at the Heritage Hill parking lot on Serrano Rd, less than a block north off Lake Forest Dr (west of the intersection of Lake Forest Dr & Trabuco Rd.) Walking shoes OK for these hikes. Rain cancels.

Helen Maurer (949) 768-0417 7gables@cox.net

**Saturday, October 20, 2018 -Sunday, October 21, 2018**

**0417-Sierra Sage of SOC Group Outing**

**O: Cedar Springs backpack - San Jacinto**

Come join us on this on-trail backpacking trip to a pristine section of the desert divide overlooking the Coachella valley. This is a moderately difficult backpack of 6 miles round trip and 2000' gain/loss. The reward will be to camp in a tall stand of trees near to running water with possible spectacular views of the valley floor. On day one, we will hike up to camp, relax and have happy hour with a possibility of some exploration of the area. On day two, we will break camp and hike back to the trailhead. Interested participants must have backpacking experience, must be self-sufficient and are expected to carry all their food, 2 quarts water, and camping gear. Submit a hiking resume to the leaders for consideration. More information will follow, pending acceptance to the outing.

Todd Clark (714) 803-0195 clarkta@hotmail.com

**Saturday, October 21, 2018, 8:30 AM**

**0417 – Sierra Sage of SOC Group Outing**

**O: Live Oak Trail, O'Neill Park**

6.5 mi with 600 gain/loss with great views of O'Neill Park and the foothills of the Santa Ana Mountains. Meet at the South end of Meadow Ridge Road, park on side of road. Directions: Exit I-5 at El Toro road, take El Toro East for approx. 5 miles to Arroyo Vista, turn right onto Arroyo Vista, then right again onto Meadow Ridge Road. Follow to the end. Bring hat 2 quart/liters of water, munchies, --Poles recommended

Michael Sappingfield (949) 633-6993 mikesapp@cox.net

**Wednesday, October 24, 2018 9:00 AM**

**0407-Orange County Group Outing**

**O: Bear Canyon Loop**

7 mi, 1000' gain up from the Candy Store through chaparral and oaks and wildflowers, then up the ridge to 4 Corners and back by shady Pigeon Springs. Meet 9:00 am at the South Orange County rideshare point (Bravo Burger on Ortega) or 9:30 am across from the Candy Store on Ortega Hwy, parking lot with Forest Service Pass. Bring 2 qts water, snack/lunch, hiking shoes/lugsoles. Ldr: Sherri Sisson. Asst: Sylvia Stevenson.

Sylvia Stevenson (949) 616-2765 sjstevenson2828@yahoo.com

**Saturday, October 27, 2018 8:30 AM**

**0417 Sierra Sage of South Orange County Outing**

**O: Emerald Trail Hike, Laguna Coast Wilderness**

7 mi, 800' gain/loss. Up Laurel Canyon, to Boomer, then down and back up Emerald Canyon then down Willow to the parking lot. Good workout, plus good views, and a variety of trees and shrubs. Meet at Willow Staging Area at 8:30 am, just south of El Toro junction on the Laguna Canyon Hwy (CA-133). Bring 2 quarts/liters of water, hat, munchies and, if you want, bring your poles. Leaders, Russ Brown, Mike Sappingfield.

Michael Sappingfield (949) 633-6993 mikesapp@cox.net

**Wednesday, October 31, 2018 9:00 AM**

**0407-Orange County Group Outing**

**O: Buck Gully**

5 mi, 200 gain loop hike up the gully and back on Bobcat Trail, exploring this cool coastal canyon hidden in Corona del Mar. Meet 9:00 am at the parking lot at the corner of Marguerite Ave and 5th Av. Turn E from PCH onto Marguerite: the parking lot is across the street from the Oasis Senior Center at 801 Narcissis in Corona del Mar. Bring snack, water, sturdy walking shoes.

*Sylvia Stevenson (949) 616-2765 [sjstevenson2828@yahoo.com](mailto:sjstevenson2828@yahoo.com)*

**Wednesday, November 07, 2018 8:45 AM**

**0407-Orange County Group Outing**

**O: Icehouse Canyon Hike**

Join us for an 8 mi, 2600 gain hike in the San Gabriel Mtns along an inviting creek, past private cabins and through beautiful forests. We'll have a snack at Columbine Spring, lunch at the saddle and return the way we came. Meet 7:15 am in the lot at the corner of Nissan & Redhill behind the businesses south of I-5. Also, some may want to meet in the Icehouse parking lot at 8:45 am. Anyone interested in ride sharing from Huntington Beach please contact Kathy Fisher. Non-aggressive dogs are welcomed on this hike. Bring 2+ liters water, lunch/snacks, hiking boots/lugsoles, poles, rain jacket, non-cotton layers. *Kathleen Fisher (714) 812-5708 [fisher.k@mac.com](mailto:fisher.k@mac.com)*

**Saturday, November 10, 2018 3:20 PM**

**0417-Sierra Sage of SOC Group Outing**

**O: Signal Hill Sunset Hike**

Join us on a moderate 4 mile, 750 gain loop hike exploring the Signal Hill Trail System. Our hike will make maximum use of the walking trails inside the private residential areas before they close to the public at Sunset. Enjoy 360-degree views to the ocean, San Pedro, Downtown LA and Long Beach, and learn a little about the history of Signal Hill. After our hike, those interested can join us for refreshments at Mothers Market Cafe *Karen Deweese (562) 270-3487 [kldeweese@me.com](mailto:kldeweese@me.com)*

**Wednesday, November 14, 2018 8:30 AM**

**0407-Orange County Group Outing**

**O: Caspers West Ridge Loop**

5 mi, 400' of gain hike up the Dick Loskorn trail to the West Ridge and back down the Star Rise trail and back via the Bell Canyon Trail. Great views into the park from the ridge line. Meet at the South Orange County Rideshare point (1 blk east of I-5 on the Ortega Hwy & Rancho Viejo Road, in front of the Ball Park Pizza. We will carpool into Caspers Park. Bring 1 qt/liter of water, a hat, and munchies.

*Michael Sappingfield (949) 633-6993 [mikesapp@cox.net](mailto:mikesapp@cox.net)*

**Saturday, November 17, 2018 8:00 AM (Time Tentative)**

**0417-Sierra Sage of SOC Group Outing**

**O: Trail Maintenance in San Mateo Canyon Wilderness**

Volunteers, male and female, from the OC Group, Sierra Sage Group, and the Gorgonio Chapter maintain trails in the San Mateo Canyon Wilderness on a monthly basis. The location is selected each month based on current needs. No experience is needed, only a willingness to work. Tools and instructions are provided. Meet at the South Orange County Rideshare point (1 blk east of I-5 on the Ortega Hwy & Rancho Viejo Road, in front of the Ball Park Pizza. To receive announcements with details of each month's activities contact Leader John Kaiser ([jkai39@gmail.com](mailto:jkai39@gmail.com)). Co-leader: Rich Maxey

*John Kaiser (714) 968-4677 [jkai39@gmail.com](mailto:jkai39@gmail.com)*

## Help Wanted

1. Each month, a number of new members join the Sierra Club in South Orange County. The Executive Committee has decided that we can do a better job of welcoming them to the Sierra Club and assisting the new members to learn how to get the most out of their Sierra Club Experience.

Therefore, we are looking for members who would like to **volunteer to join the membership committee** to help contact the new members, and provide them with information and assistance getting started.

For more information and to volunteer, contact Membership Chair, Linda Ledger.

*Linda 949-444-1285 [linda.ledger@me.com](mailto:linda.ledger@me.com)*

2. Every hike conducted by the Sierra Club requires at least two leaders. **Have you every thought about becoming a leader?** Contact Todd Clark, Co-Outings Chair or Sylvie Cote, Co-Outings Chair.

*Todd: (714) 803-0195 [clarkta@hotmail.com](mailto:clarkta@hotmail.com)*

*Sylvie: (949) 547-2998 [mysylvie@hotmail.com](mailto:mysylvie@hotmail.com)*

3. 6 times a year, we host events, such as the bi-monthly meeting in which we provide refreshments. **Is making or bringing snacks to the meeting and helping set it up something that interests you?** If so, contact Hospitality Chair, Patty Sappingfield.

*Patty 949-768-3610 [solanese@cox.net](mailto:solanese@cox.net)*

4. Each year, we establish a Nominating Committee to nominate members to serve on the Sierra Sage Group's Executive Committees. The Elections are held in the fall along with the Chapter Elections. Thus the Nomination Committee is looking for candidates from now until the end of August. **If you would be interested in serving on the Nominating Committee or would like to be considered by the Nominating Committee**, contact Nominating Committee Chair, Duana Miller.

*Duana: 949-831-0890 [duana103@hotmail.com](mailto:duana103@hotmail.com)*

5. We publish our newsletter 6 times a year. Would you like designing and publishing our newsletter? We are looking for people who would like to work on two or three pages in each issue. **If you would be interested in improving our newsletter by working on it**, contact Newsletter Editor, Mike Sappingfield

*Mike: 949-633-6993 [mikesapp@cox.net](mailto:mikesapp@cox.net)*

**Your help in any area would be greatly appreciated!**

# ADVANCE NOTICE BLACK HILLS 2019

**Estimated Dates:** The last portion of June, 2019

**Trip Leaders:** Linda Ledger, Russ Brown, Audrey Tomovich.

Ever want to go "where the buffalo roam, and the deer and antelope play"? South Dakota's Black Hills is the place to go. **Custer State Park is world renowned for its large buffalo herd and at this time of the year, we can expect to see a lot of buffalo calves.** Bring your camera and binoculars as pronghorn antelope, prairie dogs, elk, deer, wild burros, mountain goats, and bighorn sheep inhabit the park and are often visible. **A jeep safari to the buffalo herds followed by a Chuckwagon BBQ** will round out the experience. Other highlights include **Mt. Rushmore, Crazy Horse Memorial, Jewel Cave and/or Wind Cave, hiking around Devils Tower as well as a hike to Harney Peak, and an optional trip to the Badlands.**



We are providing an Advance Notice so our members can plan accordingly and not miss out. Our package includes eight nights lodging in South Dakota; transportation from Rapid City to the Black Hills and return and all transportation in the Black Hills; admission fees to all group activities; and happy hours. We are still working on the final details. If this trip interests you, tell **Linda Ledger at 949-444-1285, or [linda.ledger@me.com](mailto:linda.ledger@me.com)** so when we have the details worked out, including the dates and the prices, etc. we can share them with you and send you application papers.



Angeles Chapter & Sierra Sage Group  
Present  
**HISTORICAL PENNSYLVANIA  
SEPTEMBER 14-21, 2019**

**ADVANCE NOTICE  
OPEN FOR APPLICATIONS ON 10/1/2018**

**LEADERS;  
MIKE & PATTY SAPPINGFIELD**

This 8 day, 7 night Bus excursion to Eastern Pennsylvania is designed to give us an opportunity to explore the historical areas of Philadelphia, explore the Amish county of Lancaster, and spend a day at Gettysburg Battlefield.

The trip will include **Valley Forge, the Liberty Bell, Independence Hall** where both the Declaration of Independence and the Constitution were voted into law, museums such as the **National Constitution Center, the Museum of the American Revolution, the African American Museum, Franklin Court as well as the U. S Mint and even the Rocky Balboa Statute.** Other attractions include a **Coal Mine, the Appalachian Trail, and the Hershey Chocolate World** and the world famous **Longwood Gardens.**

We will be to spending two days in the **Amish country in Lancaster** exploring and learning about the **Amish way of life, farms, and even taking a buggy ride and a Steam Railroad train and museum.** Time is set aside to explore the many shops and boutiques in the area.

As the final stop on our Historical Trip, we will spend a day at the **Gettysburg National Battlefield Park.** After we have enjoyed the movie and displays at the Visitor Center, we plan to have a guide with us who will be on the Bus with us answering questions and stopping at key points.

Our package includes 7 nights Lodging, all breakfasts, all transportation as well as all scheduled attractions and entrance fees in Pennsylvania. Lunches, dinners, transportation to and from Philadelphia are not included.

Cost for the trip is **\$1395.00** per person based on 2 people to each room. A few private rooms will be available on a first come, first gets basis at an additional cost. We plan to explore the possibility of a group air flight and will notify you of the details and costs to you when that is completed.





## DIRECTORY OF SIERRA SAGE OFFICERS

<b>Title</b>	<b>Name</b>	<b>Phone</b>	<b>Email</b>
Chair	Mike Sappingfield*	949-768-3610	mikesapp@cox.net
Vice Chair	Duana Miller*	949-831-0890	duana103@hotmail.com
Secretary	John Kaiser*	714-968-4677	jkai39@gmail.com
Treasurer	Patty Sappingfield*	949-768-3610	solanese@cox.net
Outings Co-Chair	Todd Clark	714-803-0195	clarkta@hotmail.com
Outings Co-Chair	Sylvie Coté	949-547-2998	mlsylvie@hotmail.com
Membership Ch	Linda Ledger*	949-444-1285	linda.ledger@me.com
Communications	Mike Sappingfield*	949-768-3610	mikesapp@cox.net
Webmaster	Bob Hansen		awildtrout@gmail.com
Circulation Chair	Patty Sappingfield*	949-768-3610	solanese@cox.net
Political Chair	Sharon Koch*	949-717-7745	slkoch@ix.netcom.com
Chapter Rep	Vanessa Glotzbach*	949-585-3646	vglotzbach@gmail.com
Alt Chap Rep	Mike Sappingfield*	949-768-3610	mikesapp@cox.net
Program Chair	Ed Maurer*	949-768-0417	balois@cox.net
Elect Media Mgr	Vanessa Glotzbach*	949-585-3646	vglotzbach@gmail.com
Media Contact	TBD		
ExComm Mbr	Ed Maurer*	949-768-0417	balois@cox.net
ExComm Mbr	Helen Maurer*	949-768-0417	7gables@cox.net
Aliso Hobo Ridge TF	Penny Elia		greenpl@cox.net
Santa Ana Mtns TF	John Kaiser*	714-968-4677	jkai39@gmail.com
San Onofre TF	Marni Magda		marnimagda@gmail.com

Note: \* Denotes voting member of the Executive Committee

### SIERRA SAGE MEETINGS.

- Executive Committee meetings are open to all members of the Sierra Club who reside in South Orange County. Meetings are on the 2nd Thursday of each month. Contact Mike Sappingfield at [mikesapp@cox.net](mailto:mikesapp@cox.net) for date, time and directions.
- Preserve the Coastal areas of Orange County? Contact Penny Elia at [greenpl@cox.net](mailto:greenpl@cox.net)
- Interested in electing environmentally supportive politicians into local offices? Contact Ray Heimstra at [raymondheimstra@gmail.com](mailto:raymondheimstra@gmail.com)
- Want to keep the Santa Ana Mountains wild? Or even want to help maintain the trails in the San Mateo Wilderness Area? Contact John Kaiser at [jkai39@gmail.com](mailto:jkai39@gmail.com)



### Subscription Information Sierra Sage Newsletter

<b>Subscription Rates;</b>	<b>1 Year</b>	<b>\$ 9.00</b>
	<b>2 Years</b>	<b>\$15.00</b>

Please mail your check to:

**Sierra Sage  
P. O. Box 524  
Lake Forest, CA 92609**

**Note: This is a new  
Address**

**Sierra Sage is scheduled for delivery on Jan 1, March, 1, May 1, July 1, Sept 1, and November 1 of each year. Please note that submission deadline is one month prior to publication.**

*Electronic copies are sent via email and are free. Just send an email to [mikesapp@cox.net](mailto:mikesapp@cox.net) and tell us you want the emailed Newsletter*

### INTERNET ADDRESSES:

**Angeles Chapter:** [www.angeles.sierraclub.org](http://www.angeles.sierraclub.org)

**Sierra Sage:** [www.sierrasage.org](http://www.sierrasage.org)



**Sierra Sage of South Orange County**  
**P. O. Box 524**  
**Lake Forest CA 92609**

First Class Mail

Subscribers.....Check the  
 "Last Issue" date on your  
 label and renew early.  
 Don't forget to give us your  
 new address if you're mov-  
 ing so you'll get your Sage  
 at your new place on time!

## Website:

### HIKE OF THE MONTH

**Saturday, October 13, 2018 8:30 AM**  
**0417-Sierra Sage of SOC Group Outing**  
**O: Ancestor's Trail Hike**

5.5 mile, 450' gain/loss hike in the backcountry of San Onofre State Beach. The Ancestors Trail is a single track hiking/biking trail from the ridge winding its way down to a creek bed and then downstream for a couple of miles before working up to the ridge line and following high tension line access roads back to the start. Meet at 8:30 am at the south-east end of La Pata in San Clemente at the dog park. Lots of parking available on the side of the road. Bring at least a quart (liter) of water and munchies. Hat is desirable as trail is open to the sun.

*Michael Sappingfield (949) 633-6993*  
*mikesapp@cox.net*

## Join the Sierra Club

Yes, I want to join! I want to help safeguard our nation's precious natural heritage. My check is enclosed.

Name \_\_\_\_\_

Address \_\_\_\_\_

City, State \_\_\_\_\_ Zip \_\_\_\_\_

**F94Q -0417**

Membership Categories (circle one)

	Individual	Joint
Introductory	\$15	
Standard	\$39	\$49
Supporting	\$75	\$100
Contributing	\$150	\$175
Life	\$1000	\$1250
Senior	\$25	\$35
Student	\$25	\$35
Limited Income	\$25	\$35

Send Check to Sierra Club, P. O. Box 421041, Palm Coast, FL 32142-1041      Membership not tax deductible